



Surgery

Extraction Forceps	60
Rongeurs	67
Hemostatic Forceps	69
Surgical Curette	70
Elevator	72
Periosteal Elevator	80
Needle Holder	85
Periodontal Knife	90
Bone Chisel / Mallet / Bone File	91
Mouth Gag / Retractor	94
Suture Scissors	96
Gum Scissors	97
Injection Cartridge Syringe	99
Tissue Pliers	100
Aspirator	103
Sonde / Irrigating Syringe	104

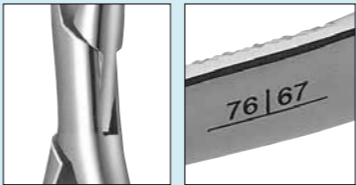




Extraction Forceps

Reference Chart

	Anterior	Premolar		Molar	Wisdom Teeth	Roots		Root Separation
Upper	#1	#32	#4	#10S	#8	#65	#69 / Root / Anterior Root / Posterior Root	#67
Lower	#46	#21		#17 / #27	#222	#44		#66



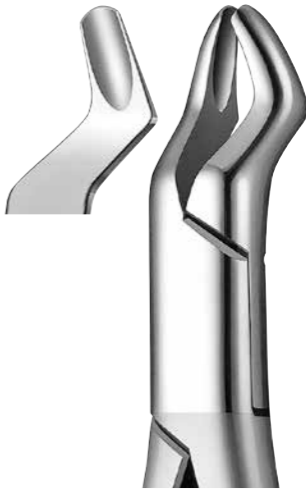
*Triple layered joint provides superior in accuracy and durability.
*Dental formula is printed inside the handle.



#1
Upper anterior
No. 17001



#4
Upper premolar / Lower premolar
No. 17004



#10S
Upper molar
No. 17010



#17
Lower molar
No. 17017



#46
Lower anterior
No. 17046



#32
Upper premolar
No. 17032



#21
Lower premolar
No. 17021



#27
Lower molar
No. 17027



#8
Upper wisdom teeth
No. 17008



#222
Lower wisdom teeth
No. 17222



#65
Upper roots
No. 17065



#44
Lower roots
No. 17044



#69
Upper roots / Lower roots
No. 17069



Root
Upper roots / Lower roots
No. 17070



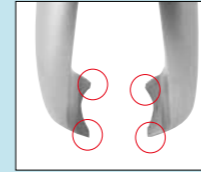
#67
Upper root separation
No. 17067



#66
Lower root separation
No. 17066

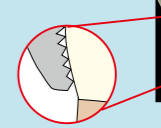
Extracting Forceps Claw

[Evolved Extracting Forceps]

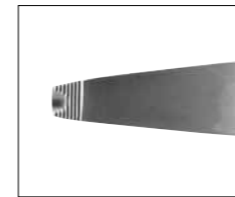


*3 or 4 claws always hold any tooth cervix dynamically well. Therefore this forceps are suitable for any shape of tooth cervix.

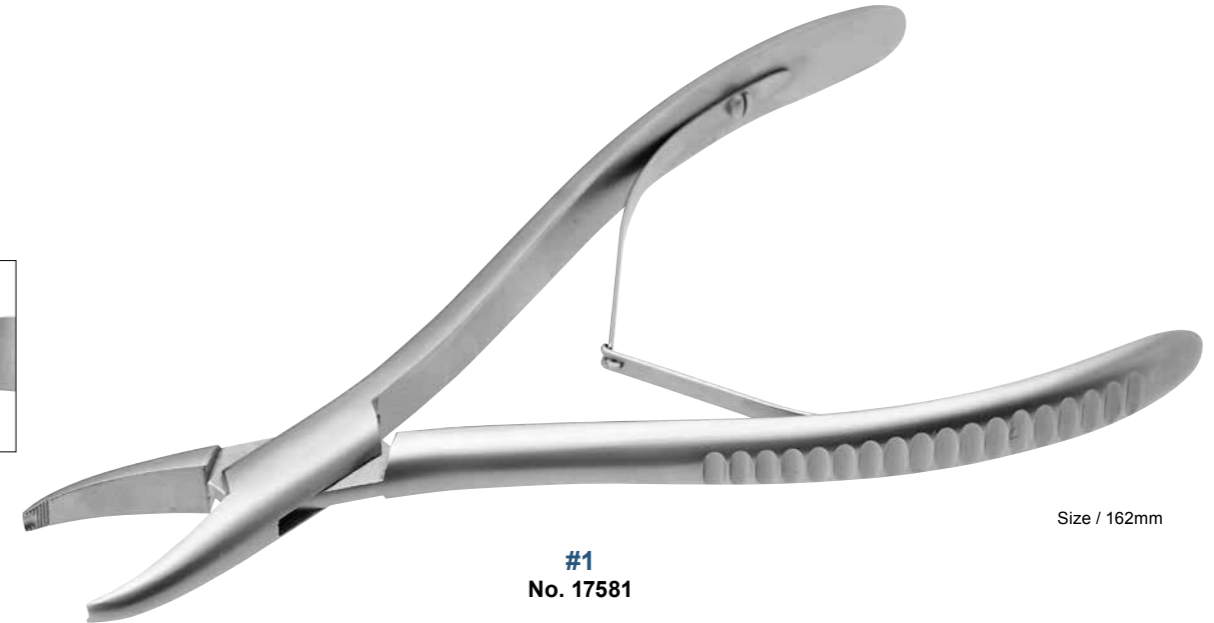
[Rough Surface inside the Tip]



*The fulcrums of claws and the edge of rough surface inside the claws make holding power more stronger. Therefore this forceps prevents Dr. from putting too much power on this forceps and this efficiency makes it possible to extract such as fragile tooth or damaged one.

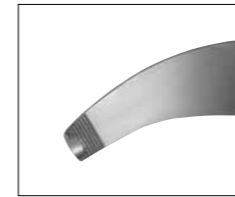


[Actual Size]

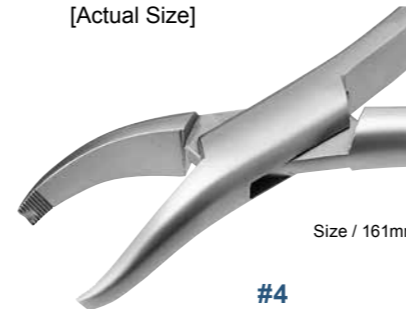


#1
No. 17581

Size / 162mm



[Actual Size]

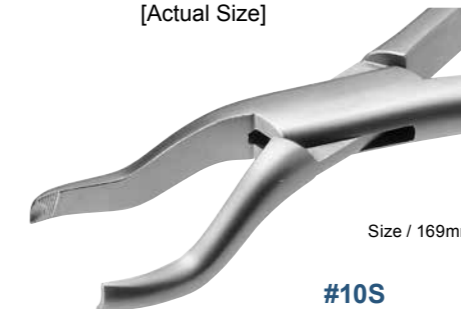


#4
No. 17582

Size / 161mm



[Actual Size]

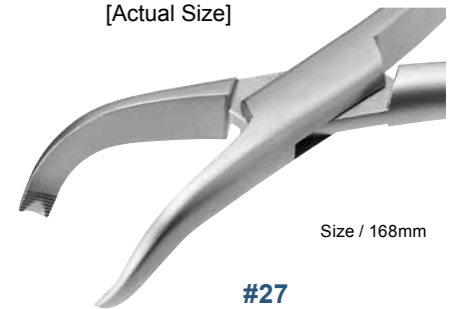


#10S
No. 17583

Size / 169mm



[Actual Size]



#27
No. 17584

Size / 168mm

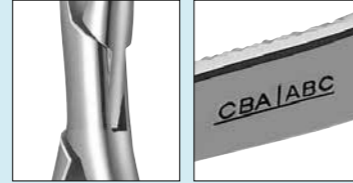


Pediatric Extracting Forceps



Reference Chart

	Anterior		Posterior		Roots
Upper	#1	#An	#10S / #Po-U	#4	#69
Lower	#46		#21 / #27 / #Po-L		



- *Triple layered joint provides superior in accuracy and durability.
- *Dental formula is printed inside the handle.



#1
Upper anterior
No. 17501



#46
Lower anterior
No. 17546



#10S
Upper posterior
No. 17510



#21
Lower posterior
No. 17521



#27
Lower posterior
No. 17527

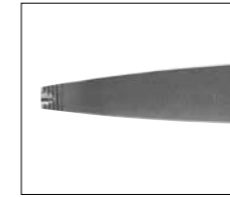


#4
Upper posterior / Lower posterior
No. 17504

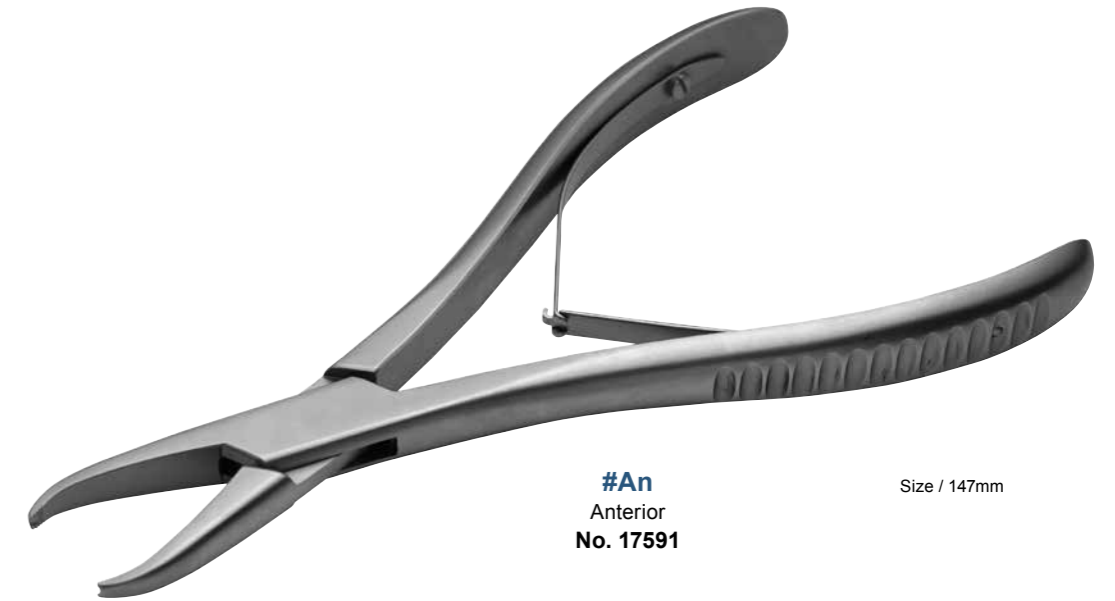


#69
Upper roots / Lower roots
No. 17569

Pediatric Extracting Forceps Claw



[Actual Size]



#An
Anterior
No. 17591

Size / 147mm



[Actual Size]

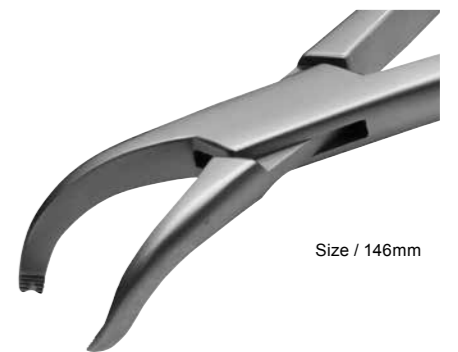


#Po-U
Upper posterior
No. 17592

Size / 146mm



[Actual Size]



#Po-L
Lower posterior
No. 17593

Size / 146mm

*Designed to securely hold any condition of deciduous teeth.

*Ergonomically designed handle offers flexibility and greater tactile sensitivity.



Rongeurs

-Hirakawa-



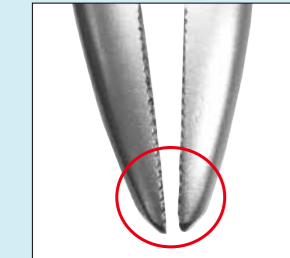
#1
Upper / Lower
No. 17801



#2
Upper
No. 17802

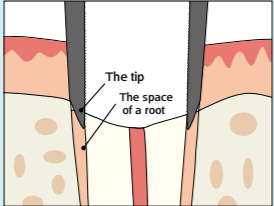


#3
Lower
No. 17803

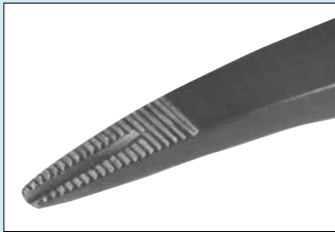


*We manufactured suitably thin tip for approaching very narrow spaces of a root.

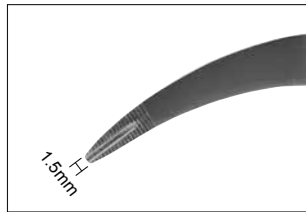
[The image of approaching the space of a root]



*The back of the edge is suitably thin to approach the space of a root.



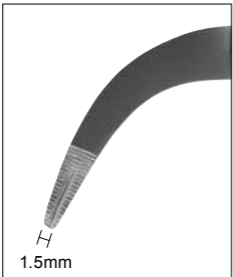
*Even a remaning root is fragile,The serration holds it without putting too much power.



[Actual Size]



for Anterior Root
No. 17073



[Actual Size]



for Posterior Root
No. 17074



*The neck is slender and long enough to avoid adjacent tooth.

-Delicate-

*Excellent for bone removal in narrow areas.

*Compact design is also suitable for removing old granulation tissue.



A

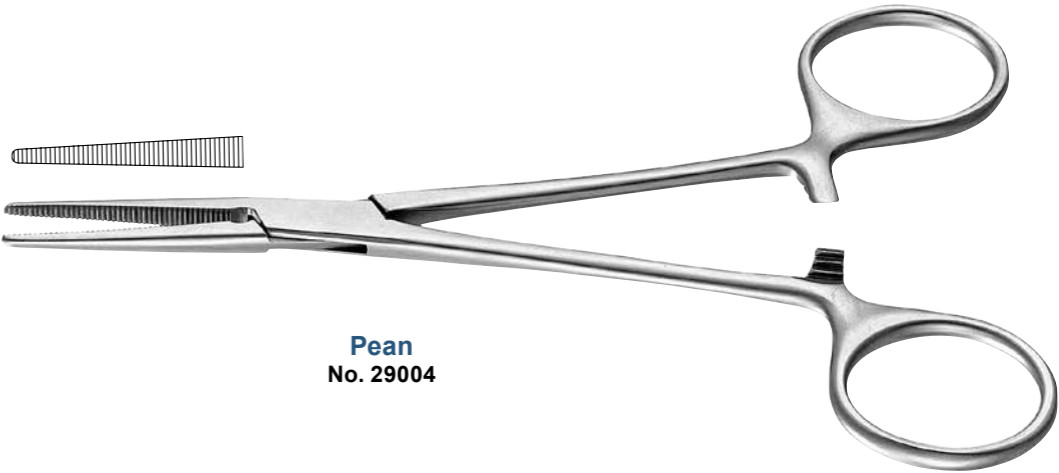
No. 17805



C

No. 17807

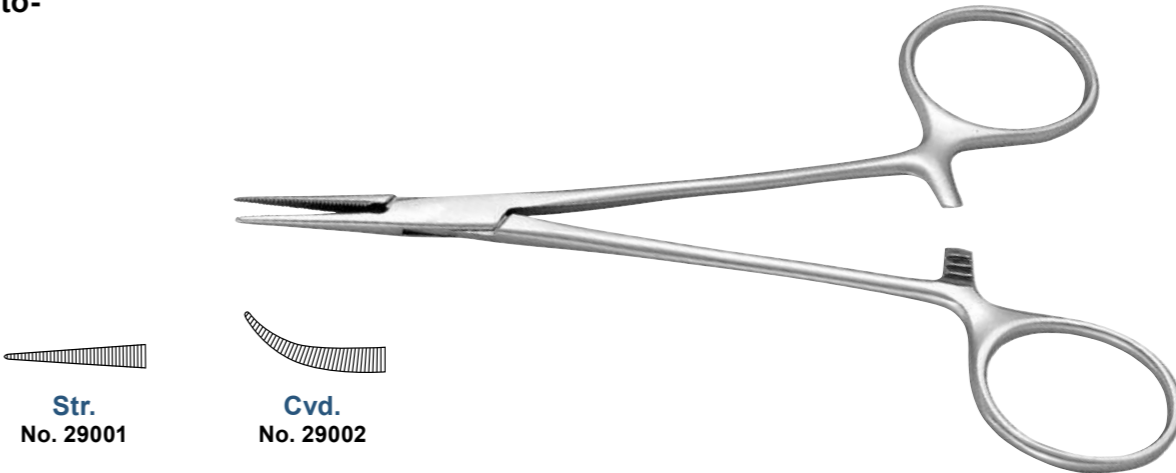
Hemostatic Forceps



Pean

No. 29004

-Mosquito-



Str.

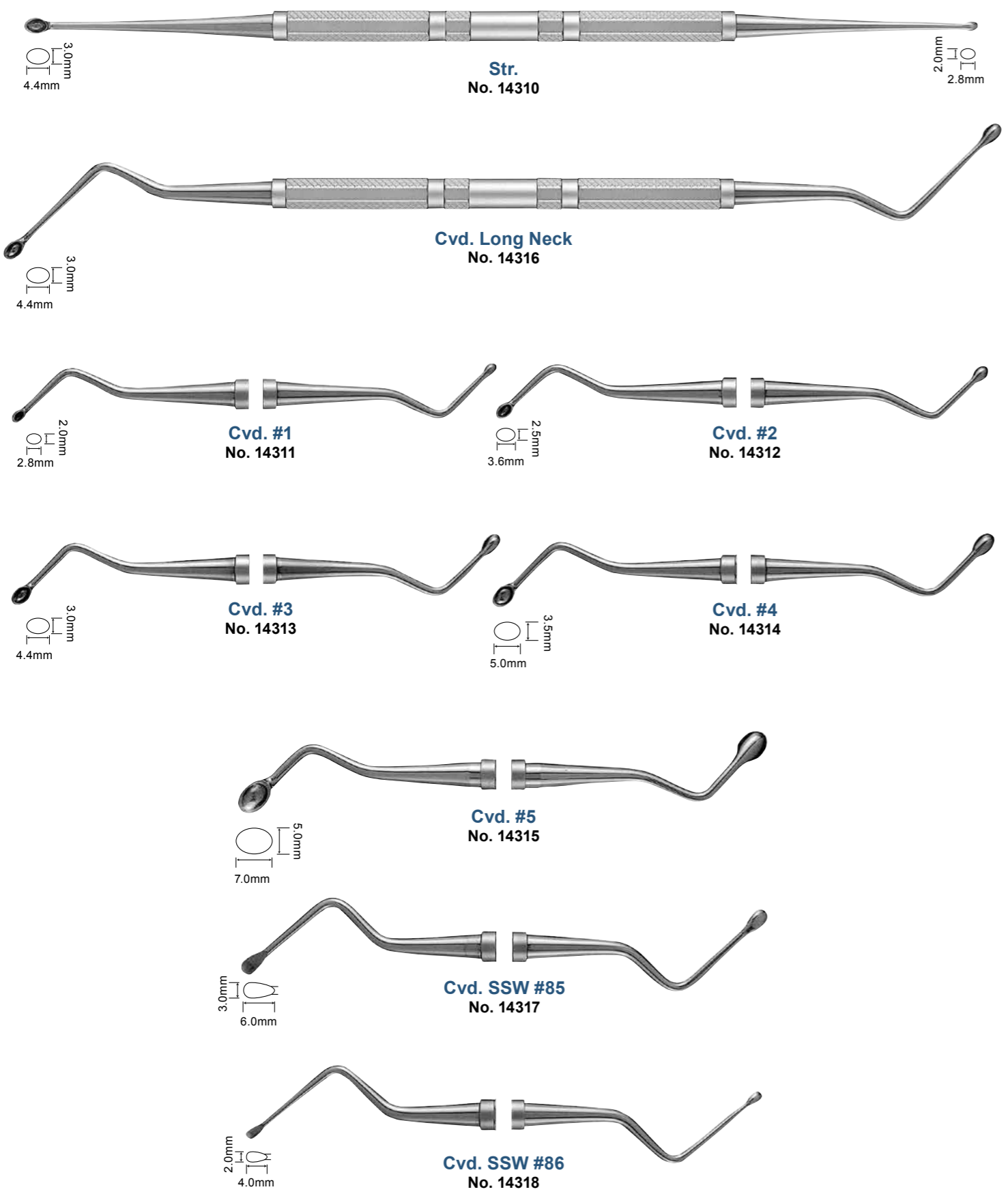
No. 29001

Cvd.

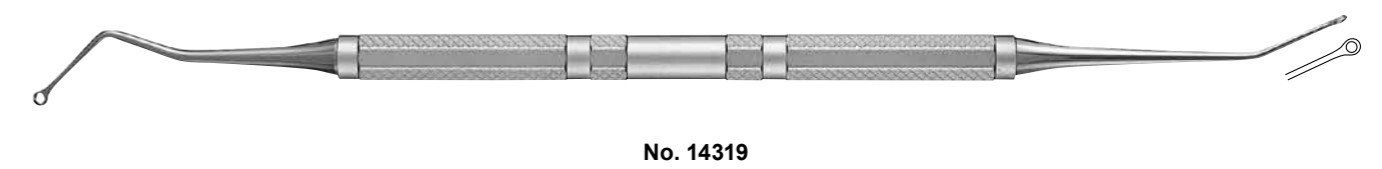
No. 29002



Curette



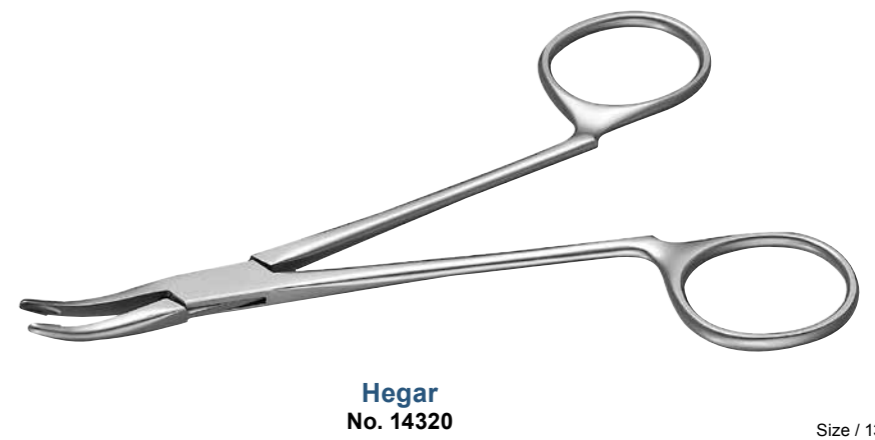
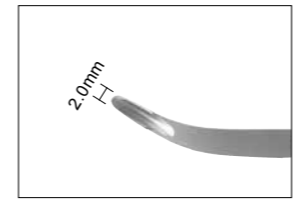
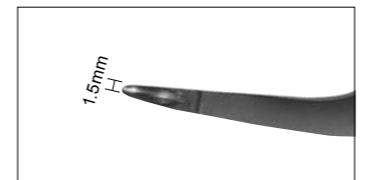
-Windowed Curette-



Tissue Forceps



*Since handle has a spring, delicate regulation of power can be performed and held soft tissue firmly.
*Thin and long tip allow easy insert to the narrow tooth extraction socket and reach to the last molar.





Elevator

-B Handle-



Str.



#1S
Width 4.0mm
No. 16101



#2S
Width 3.5mm
No. 16102



#3S
Width 3.0mm
No. 16103



#4S
Width 2.5mm
No. 16104



#5S
Width 2.0mm
No. 16105

Angled



#20AL
Width 3.5mm
No. 16015



#21AL
Width 3.5mm
No. 16016



*With an angled shank can insert posterior teeth smoothly.



*It is effective also in the approaching from lingual side of molar part.

Cvd.



#1C
Width 4.0mm
No. 16106



#2C
Width 3.5mm
No. 16107



#3C
Width 3.0mm
No. 16108



#4C
Width 2.5mm
No. 16109



#5C
Width 2.0mm
No. 16110

for Wisdom Teeth



#1 for WT
(Slightly Cvd.)
Width 3.0mm
No. 16065



#2 for WT
(Deeply Cvd.)
Width 3.0mm
No. 16066



#3 for WT
(Oppositely Cvd.)
Width 3.0mm
No. 16067

*The tip is 20mm longer than regular elevators.

*To avoid slippery and easy control of blade, they have finger rest.

*Handle is marked "WT".



Elevator

-B Handle-

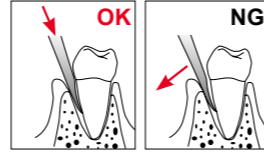
Spear



*With a thin spear-like tip can insert in narrow periodontal membrane cavity easily, and periodontal ligament fibers are cut and it exfoliates.

*Excellent for immediate implantation.

*Since this product is an instrument which cuts a periodontal ligament and carries out extrusion of a tooth by wedge action, the blade is very thin. Therefore, please do not perform operation in which a root is raised by leverage, there are possibility of the breakage of blade and fear of distortion.



-D Handle-



#1S
No. 16141

#1C
No. 16144

#1R
No. 16147



#2
No. 16145

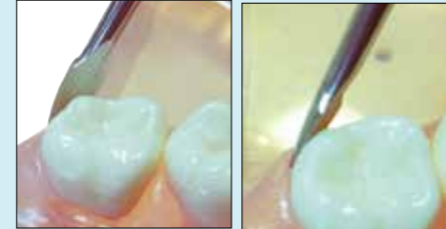
#3
No. 16146

[#1C (Curve)]



*The curve of the tip can approach the "molar" smoothly.

[#1R (Reverse)]



*Inside curve of the tip can approach the end of molar, lingual and palate side.

[#2 #3]



*This curved shape of a shank is suitably effective for "molar" to approach with ease.

*The tip is positioned on the extended line of the handle for handling balance. It makes Dr,s comfortable to keep the balance of operation.



Str.



#1S
Width 4.0mm
No. 16121

#2S
Width 3.5mm
No. 16122

#3S
Width 3.0mm
No. 16123

#4S
Width 2.5mm
No. 16124

#5S
Width 2.0mm
No. 16125

Cvd.



#1C
Width 4.0mm
No. 16126

#2C
Width 3.5mm
No. 16127

#3C
Width 3.0mm
No. 16128

#4C
Width 2.5mm
No. 16129

#5C
Width 2.0mm
No. 16130



Elevator

-D Handle-

NM-Type

- *NM series, with thin and fan-shaped tips*In a twisting action, wide edge works effectively.
- *The thin tip can easily get into narrow root space.
- *Its widely designed both ends of the edge effectively work on the root.



#NM1
Width 5.0mm
No. 16055



#NM2
Width 4.5mm
No. 16056



#NM3
Width 4.0mm
No. 16057



#NM2A
(Oppositely Cvd.)
Width 4.5mm
No. 16058

[#NM2]



[#NM2A]



Root #NM1
Width 2.5mm
No. 16554

*Handle is marked "RT".

[Root #NM1]



#NM2 for WT
Width 4.5mm
No. 16095

*The tip is 10mm longer than regular NM elevators.

*To avoid slippery and easy control of blade, they have finger rest.

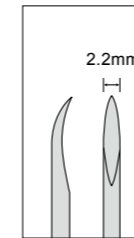
*Handle is marked "WT".



#NM2A for WT
(Oppositely Cvd.)
Width 4.5mm
No. 16098



Root Tip Pick



#1S
No. 16085



#2A
No. 16086



#3A
No. 16087

#2A / #3A

*With a angled shank can insert postrior teeth smoothly.



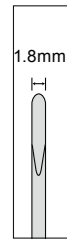
Double End
No. 14601



Root Tip Elevator

*This thin tip of the elevators has easy access to stricture periodontal ligament gaps.

*You can choose one of the most suitable elevators with many types of angles, depending on angle, mouth-opening capacity or condition of remaining roots.



Str.



#1S-0
No. 16810

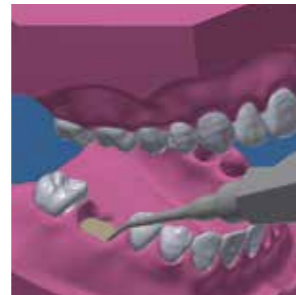


*The straight type is preferable, which is able to align the line of the tip in that of a front tooth. When it come to molar teeth, it is surely effective for the first broadening of the periodontal ligament gaps as well.

Cvd.



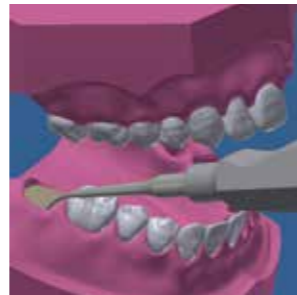
#1S-15
Cvd.15°
No. 16811



*It is relatively difficult to align the line of the elevator's tip in the line (axis) of a molar tooth. So choose the appropriate one of the 2 curved elevators, depending on the position of the target root and type of patient's mouth.



#1S-30
Cvd.30°
No. 16812



Oppositely Cvd.



#1S-15R
Oppositely Cvd.15°
No. 16813



#1S-30R
Oppositely Cvd.30°
No. 16814



*Choose one of the 2 types of reversed tip elevators, 15 or 30 degree, in case you insert the elevator from the molar, tongue, or roof side.

Angled



#2A
Cvd.30°
No. 16076



*Choose 2A or 3A, especially for those who can't open his mouth widely.



#3A
Cvd.30°
No. 16077

[Str. #1S-0]



Lower molar L6, distal root

[Cvd. #1S-15]



Lower molar L6, mesial root

[Cvd. #1S-30]



Lower molar R7

[Oppositely Cvd. #1S-30]



Lower molar L7 mesial root



*Used to mark on the gum before cut.

No. 30020



Not Certified

Autoclavable up to 135°C

How to Order Stainless Steel Made Periosteal

HB2

Order 15001 Round KARAKUSA with HC3 & HB2

No.	Description
15001	Round KARAKUSA
15002	Octagonal L
15003	Octagonal S

DC3

Order 15007 DLC Octagonal S with DC2 & DC3

No.	Description
15005	DLC Round KARAKUSA
15006	DLC Octagonal L
15007	DLC Octagonal S

Next Page Handle & Tip Line up



Periosteal Customize System (Not Replaceable Type)

Handle



Round KARAKUSA

*Size / 110mm
*Handle diameter / ø9.5mm



Octagonal L

*Size / 80mm
*Handle diameter / ø8.0mm

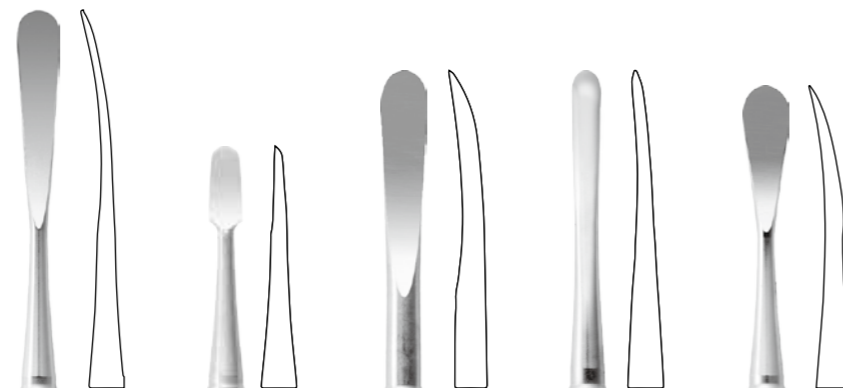


Octagonal S

*Size / 110mm
*Handle diameter / ø6.5mm

Tip

-Mucosa (Wide area)-



Stainless

HA1 HA2 HA3 HA4 HA5

DLC

DA1 DA2 DA3 DA4 DA5
*with Blade *with Blade *with Blade



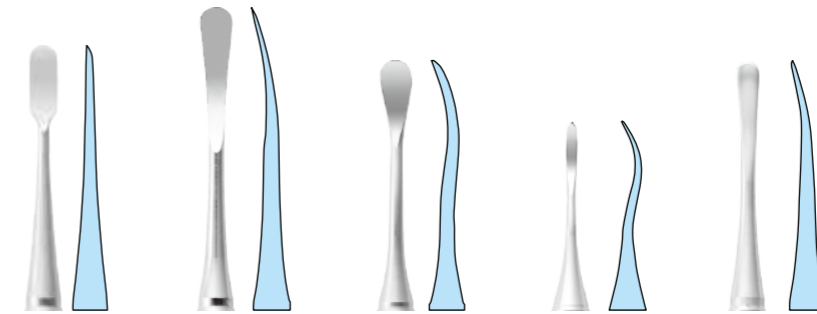
Stainless

HA6 HA7 HA8 HA9

DLC

DA6 DA7 DA8 DA9
*with Blade *with Blade

-Mucosa (Narrow area)-



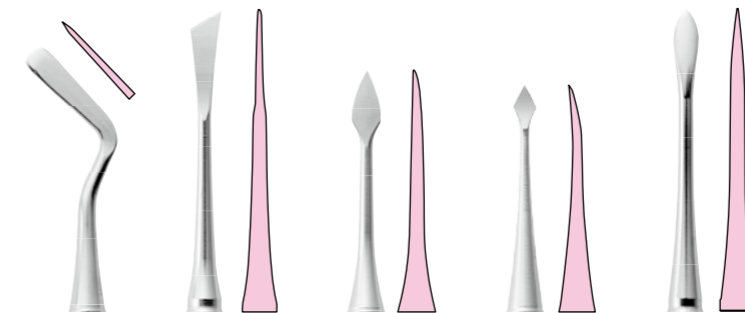
Stainless

HB1 HB2 HB3 HB4 HB5

DLC

DB1 DB2 DB3 DB4 DB5
*with Blade *with Blade *with Blade *with Blade

-Interdental Papilla-



Stainless

HC1 HC2 HC3 HC4 HC5

DLC

DC1 DC2 DC3 DC4 DC5
*with Blade *with Blade *with Blade *with Blade

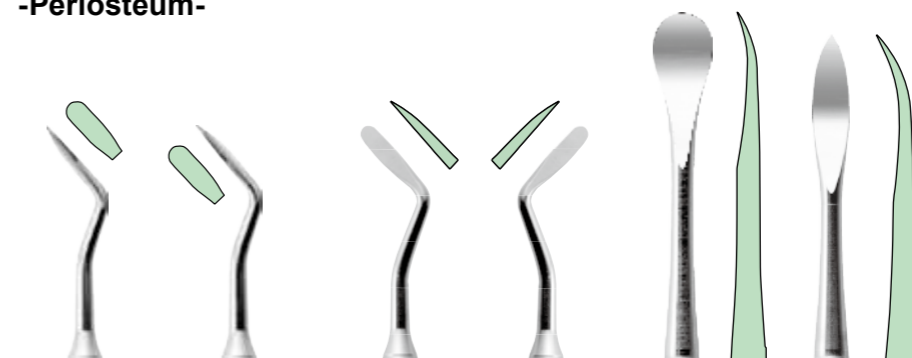
-Gum retractor-



HD1 HD2

DD1 DD2
*Mirror *Mirror

-Periosteum-



Stainless

HE1 HE2 HE3 HE4 HE5 HE6

DLC

DE1 DE2 DE3 DE4 DE5 DE6
*with Blade *with Blade *with Blade *with Blade *with Blade *with Blade

Next Page Example for Combination

Periosteal Customize System (Not Replaceable Type)

Example of Combination 1

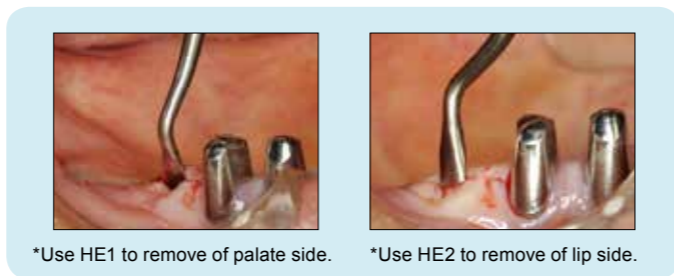
*It can be used as a mirror.



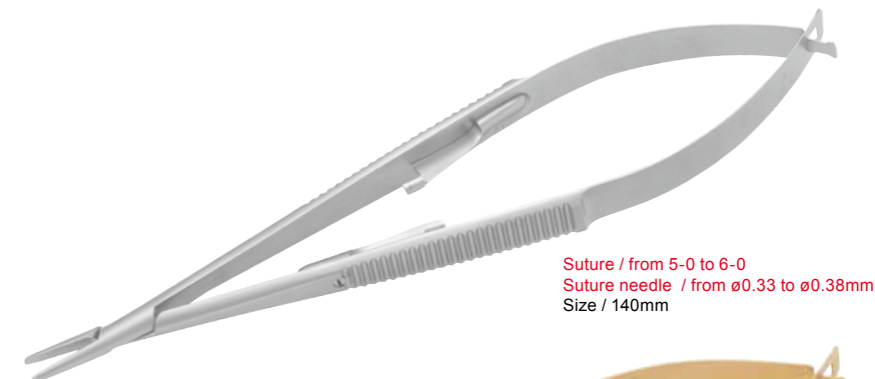
Example of Combination 2

*It is the scalprum by which the angle of four directions was given to the neck.

*They can be respond to all area and ideal for periodontal surgery.



-Castroviejo-



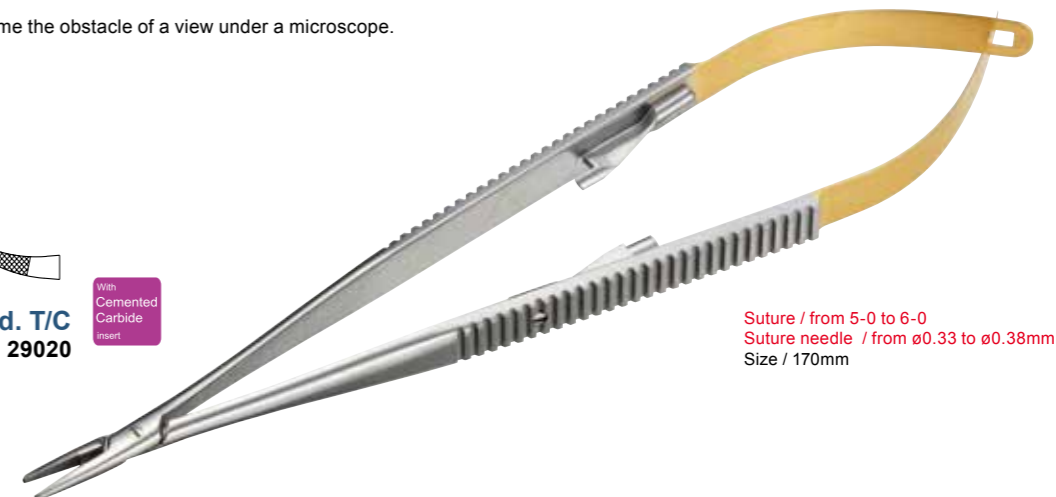
-Castroviejo HU-

*New Rachet system offers smooth and comfortable control for suturing.



-Castroviejo L-

*The long handle which does not become the obstacle of a view under a microscope.





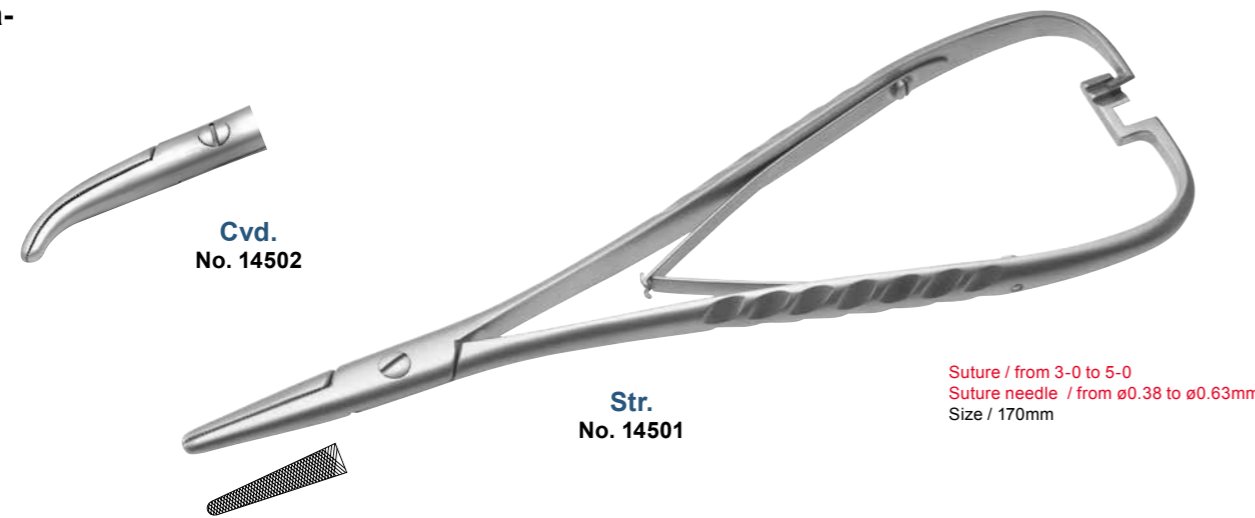
Needle Holder



T/C
No. 14505

Suture / from 3-0 to 5-0
Suture needle / from ø0.38 to ø0.63mm
Size / 170mm

-Nanaura-



Str.
No. 14501

Suture / from 3-0 to 5-0
Suture needle / from ø0.38 to ø0.63mm
Size / 170mm

-Perio-



Str.
No. 14506

Cvd.
No. 14509

Suture / from 3-0 to 5-0
Suture needle / from ø0.38 to ø0.63mm
Size / 140mm

-Mathieu-

Str. T/C
No. 29012

Cvd. T/C
No. 29017

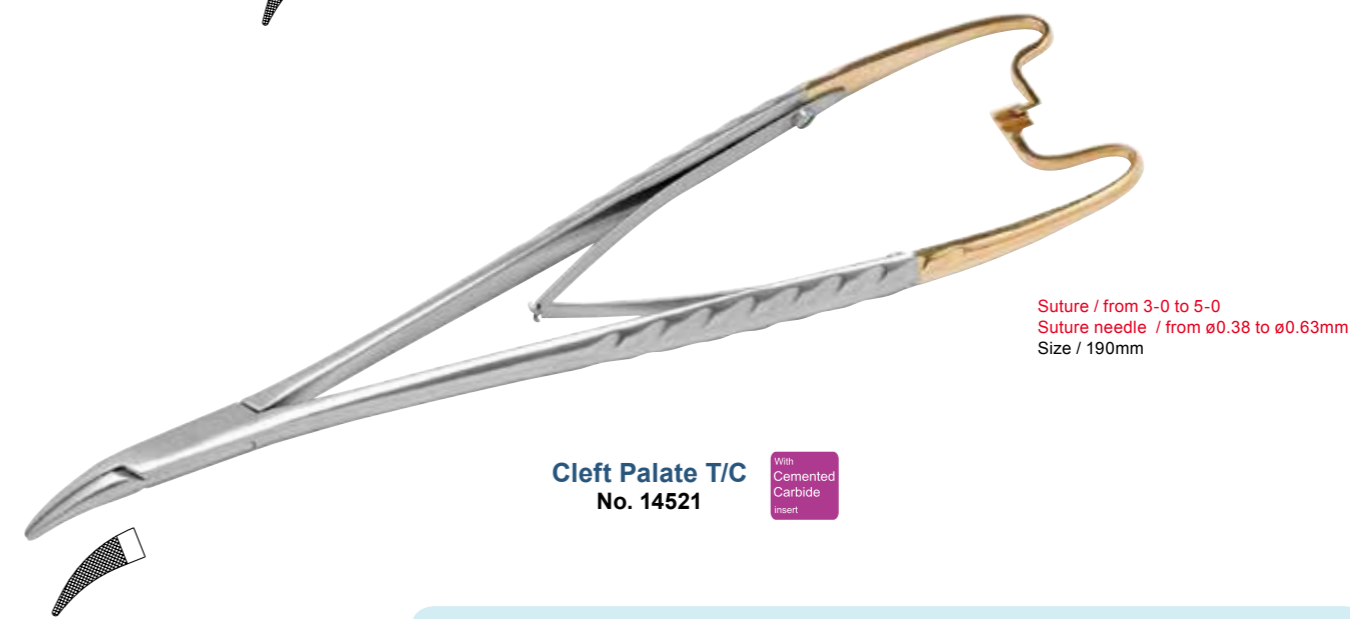


Suture / from 3-0 to 5-0
Suture needle / from ø0.38 to ø0.63mm
Size / 140mm



Fine Cvd. T/C
No. 29018

*Soft ratchet reduce the burden of fingers.



Cleft Palate T/C
No. 14521

Suture / from 3-0 to 5-0
Suture needle / from ø0.38 to ø0.63mm
Size / 190mm

*Softly able to hold with pen-grip.
*Short length between handles allow easy control in human hand.

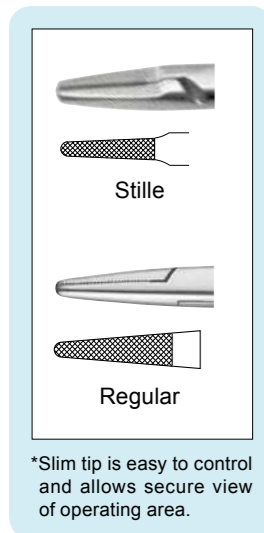




Needle Holder



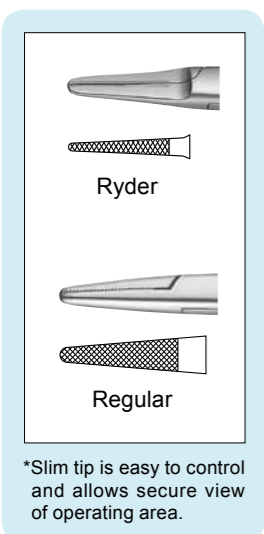
-Stille-



Hegar T/C
No. 14510



Baby-Crile-Wood T/C
No. 29014

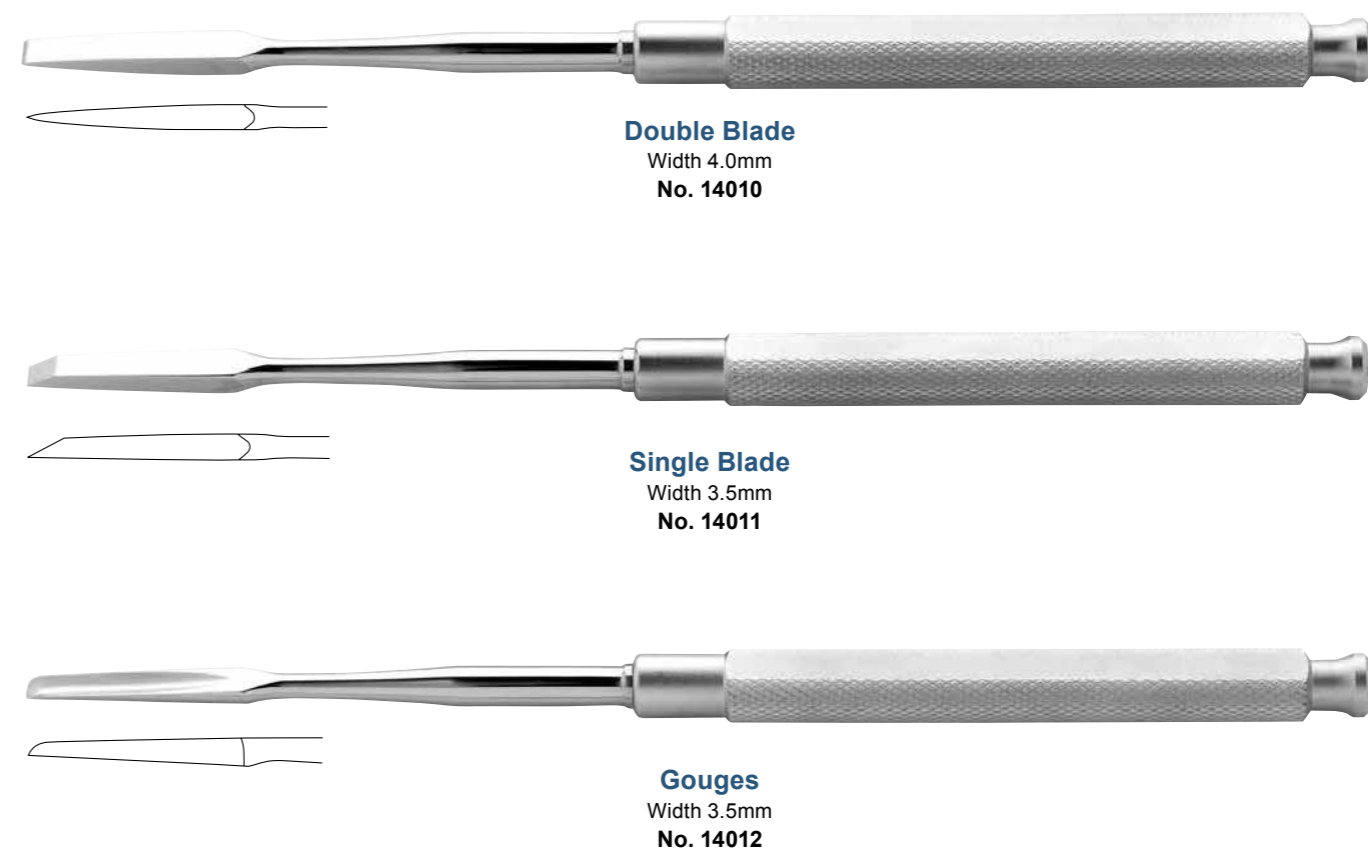
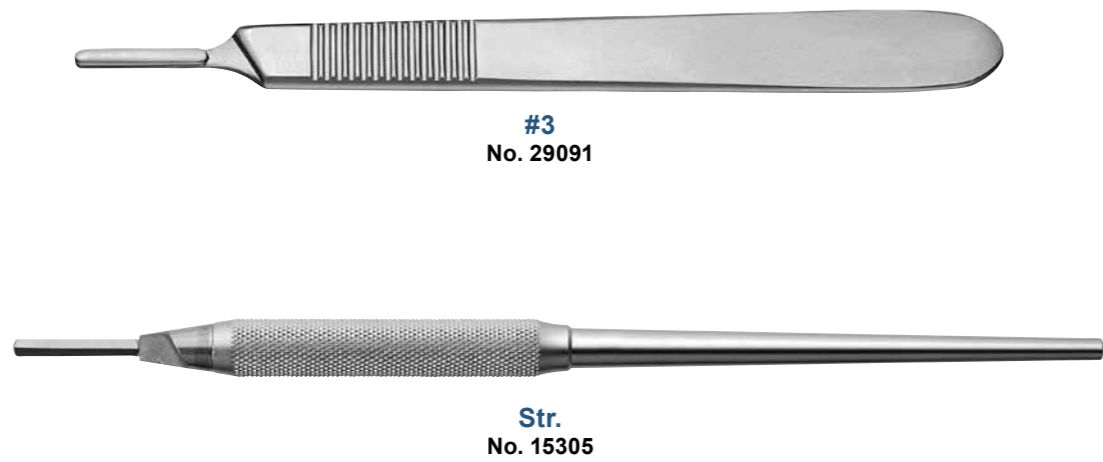
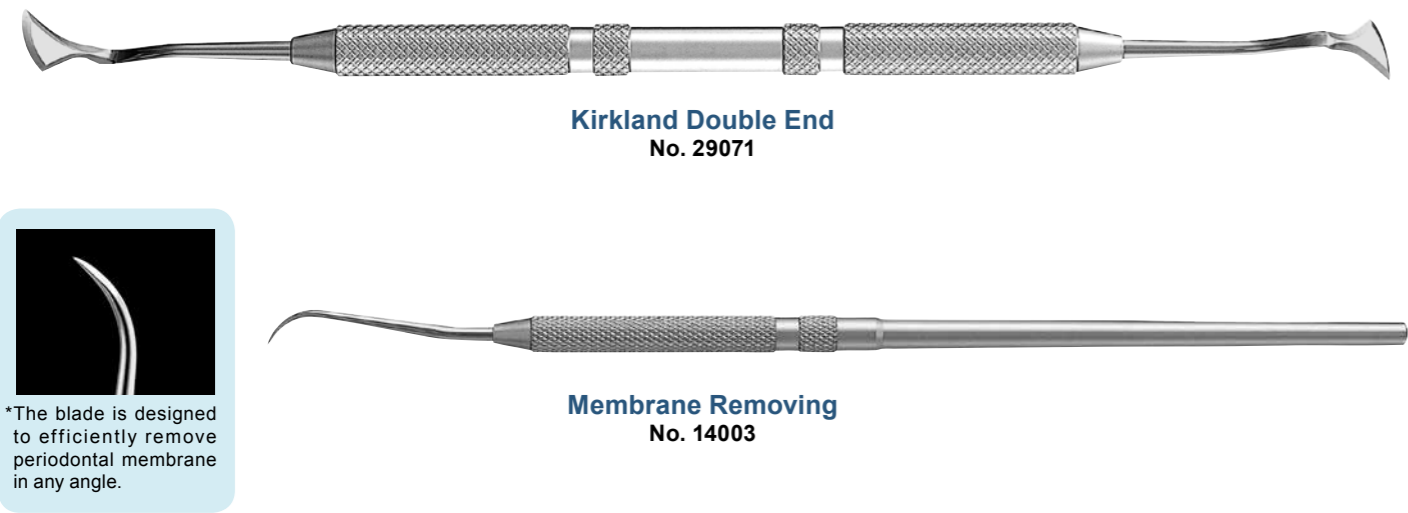


Ryder T/C
No. 14515



Halsey T/C
No. 29013





Mallet

Universal

No. 14672

*Weight / 120g

*Material / PTFE (White part)

Hard

No. 15211

*Weight / 220g

*Material / PFA (White part)

Soft

No. 15210

*Weight / 220g

*Material / Si (Gray part)

-Wooden Mallet-

No. 14671

*Size / 232mm

*Weight / 84g

Bone File

#1

No. 14401

Back Side

#2

No. 14402

Back Side

#3

No. 14403

Back Side

Bud

No. 14421

#11

No. 14411

#12

No. 14412

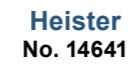
Mini

No. 14413

*Slightly smaller than Bone File #12.



Contents



Size / 135mm



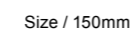
Size / 185mm

Tongue Depressor

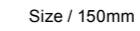


Size / 145mm

*Suitable for gum valve opening and holding during the surgery operation.



6.0mm



No. 14620

- *Suitable for displace and protect fundal part of periosteal flap.
- *Also can be used as Tongue Depressor.



Stemberg L
No. 14657

Size / 127mm



Stemberg S
No. 14658

Size / 127mm

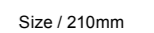


Not Certified

Autoclavable up to 135°C

*Able to displace efficiently with flat and long hook during surgery operation.

*Even if an assistant holds, a handle is long so that it may not become obstructive and it does not become the hindrance of an operation.



S
No. 15315



L
No. 15316



Suture Scissors



*Easy to hook the suturing thread due to the semi-circular edge of the scissors.



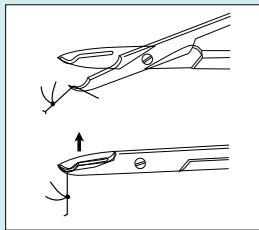
*Curved tip suitable for easy insertion of molar area.



*Ball pointed tip offers smooth cutting of suture without damaging gingiva.



*Blunt slim tip allows easy insertion of blade into suture space without damaging gingiva.



*Able to hold and pull out the suture that had been cut.

Spencer Str.
No. 29026



Spencer Cvd.
No. 29029



Safety
No. 12828



Slim
No. 12831



One-Touch
No. 12829



Gum Scissors



#18
No. 15180
*One blade serrated



#27
No. 12827



Joseph
No. 12830
*Long handle allows easy access to posterior area.



La Grange
No. 29023
*One blade serrated



Gum Scissors

-Goldman Fox-

#1
No. 12801
*One blade serrated



#1 T/C
No. 12803
*One blade serrated

With Cemented Carbide insert



#2
No. 12802
*One blade serrated



-Iris-

Str.
No. 29021



Cvd.
No. 29022



Injection Cartridge Syringe Type-2

-Screw-Type-



A
Infiltration Anesthesia
No. 14101



B
Conduction Anesthesia
No. 14102

-Lock-Type-



A
Infiltration Anesthesia
No. 14103



B
Conduction Anesthesia
No. 14104

*Material / PPS (Black part)



Tissue Pliers

-with Hook-



Str.
No. 11333



Cvd.
No. 11334

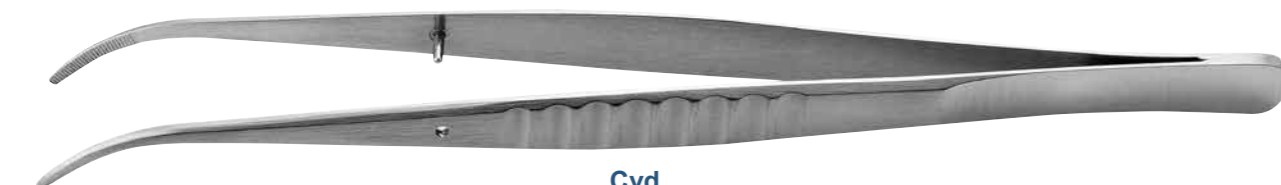


#4
No. 15040

-without Hook-



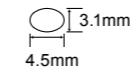
Str.
No. 11331



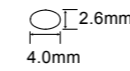
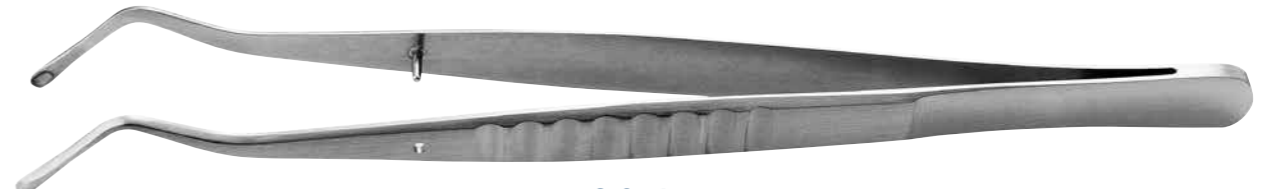
Cvd.
No. 11332

-with Curette-

*With curette shaped tip, able to hold and remove the granulation tissue.



L Cvd.
No. 11324



S Cvd.
No. 11326

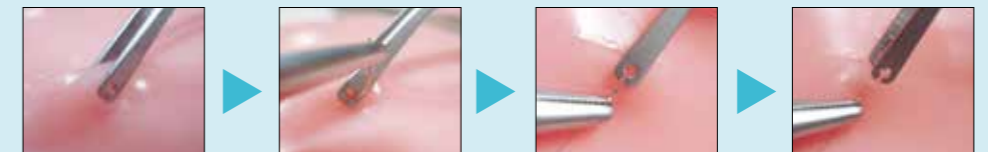
-Lucae-

No. 11210



-Suture Pliers-

No. 11216

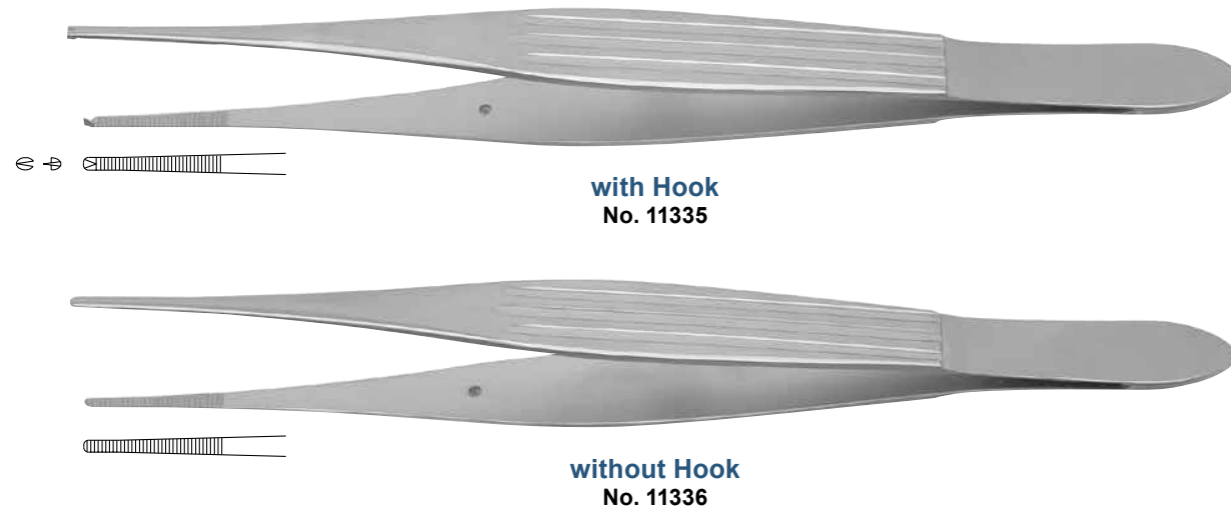


*Prevents gap during suturing by using tip to pinch the gingiva and suture through the hole.

Tissue Pliers

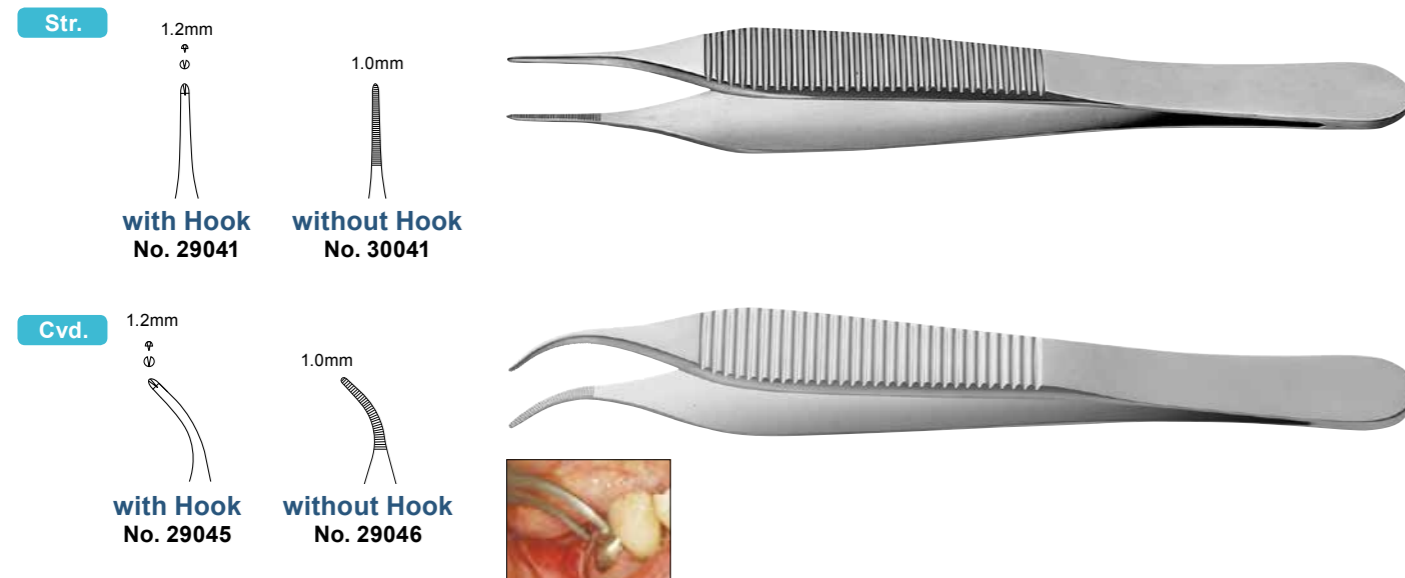


-McIndoe-



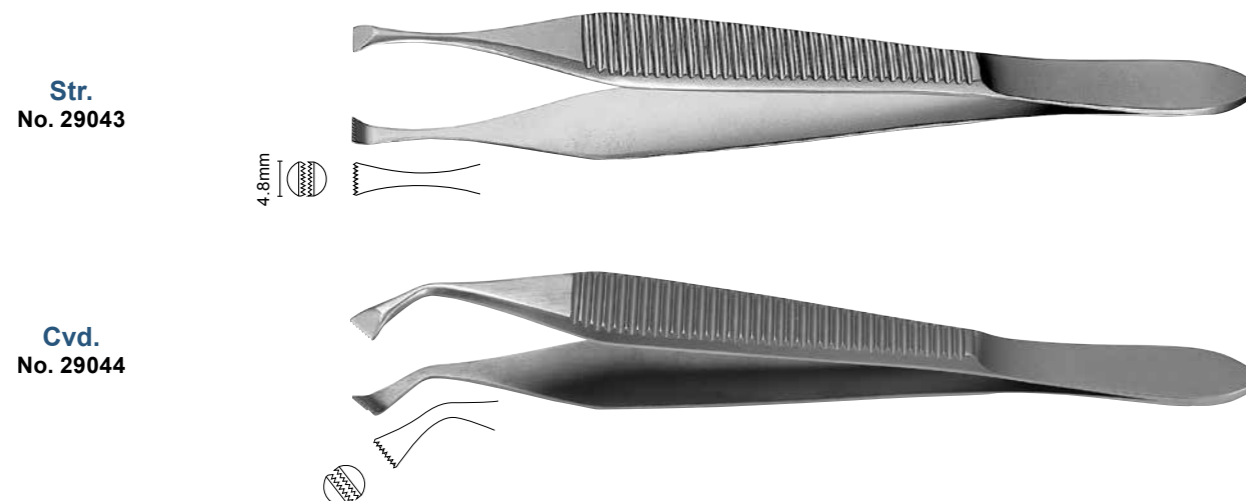
-Adson-

*Soft tissue is delicately hold at the time of a suture and an operation.

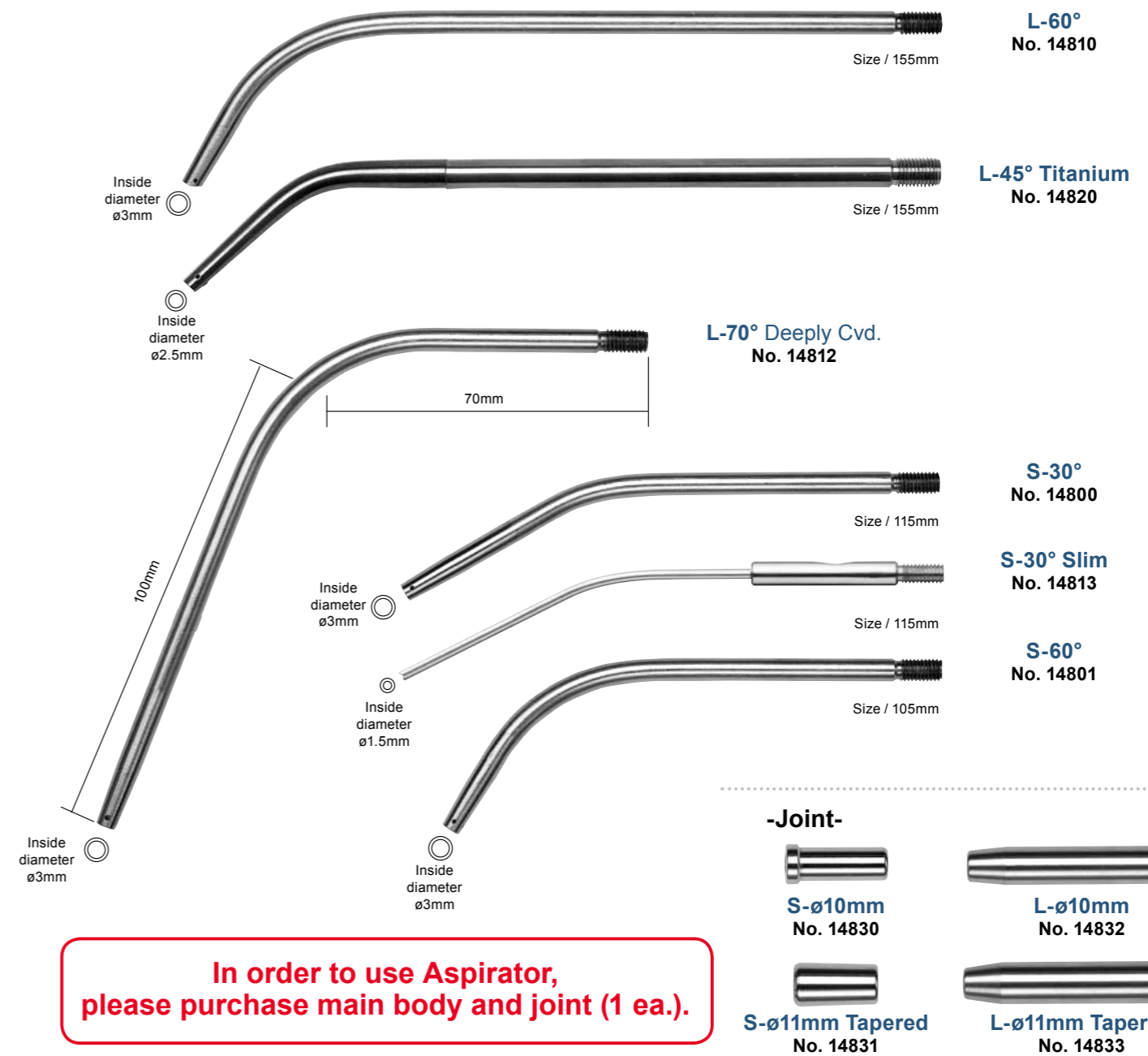


-Graefe-

*Alternate serrated tips will not damage the gum during suturing.



Aspirator



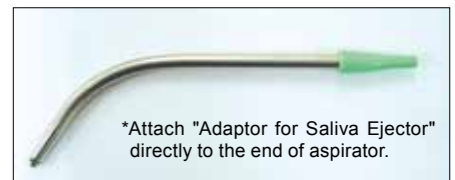
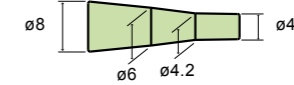
**In order to use Aspirator,
please purchase main body and joint (1 ea.).**

Sold Separately

Adaptor for Saliva Ejector No. 14840



*Able to connect the aspirator to saliva ejector joint (not evacuation tube).



*Size / 24mm
*Material / Si

Adapter
No. 13614



*In case the inside diameter of evacuation tube is 16mm, this adaptor is required for use of the aspirator.

*Joint $\varnothing 11$ with Tapered is needed for the connection with aspirator.

Cleaning Brush S (ø 4mm)
No. 13651
 (12 ea.)

Not Autoclavable



Size / 200mm

Cleaning Wire
No. 13654
(12 ea.)

Autoclavable
up to 135°C

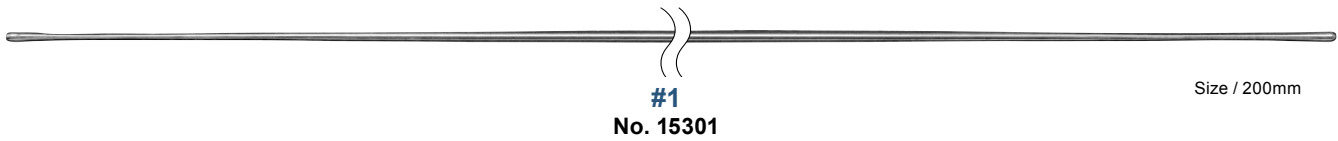


Size / 150mm

*For "Aspirator S-30° slim", (No. 14813)
*ø1.1mm



Sonde

Sonde Holder Set
No. 15020

Contents

Holder / Tip

Individual Parts

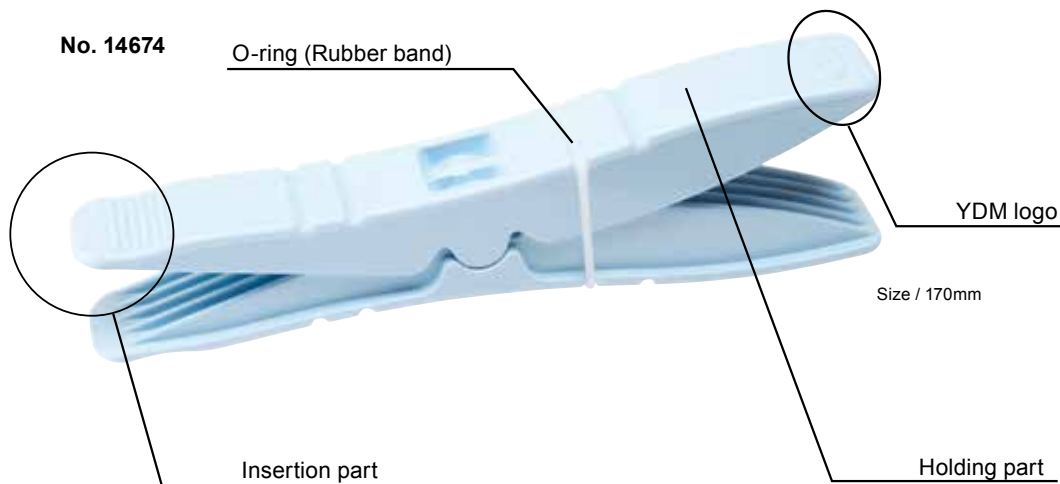
No.	Description
15021	Tip
15022	Holder



Irrigating Syringe



Jaw Opening Trainer



Sold Separately

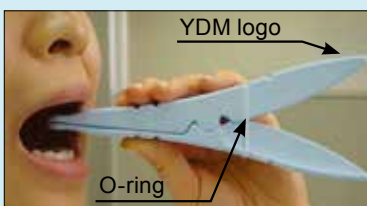
Silicon Cover (2 ea.)
No. 90424

*Bite pressure / up to 490N

*Material / PC, ABS (Main body)
Si (O-ring)*Structure automatically opened by the power of the
O-ring hung on the opposite side.

-How to Use-

*Photo by: Tokyo Medical Dental University (Temporomandibular Joint Clinic)



1) Close an insertion part (the side which does not have a YDM logo) by hands and inserts into a mouth.



2) Adjust the dimpled area to the canine.



3) Grasp at the holding part lightly and an insertion part will open by the power of O-ring.