

B&L BIOTECH

Where Innovation Meets Excellence



B&L Biotech was established by several dentists. These dentists, who specialize in endodontics, share a common goal of providing and improving the quality of treatment and patient care with unprecedented innovation, excellence, quality, service, and product development.

B&L is one of the fastest rising companies in the global dental community. B&L introduced the first cordless heated plugger system and gutta percha delivery system, known respectively as the B&L AlphaII and the B&L Beta. B&L offers many other innovative products including the patented micro-projection ultrasonic tip technology, and continues to strive to develop many more products.

B&L currently services over 32 countries. In May of 2010, B&L opened its first facility in the USA, just outside of Philadelphia, to better serve the global dental community. In December of 2014, B&L relocated its US branch to Northern Virginia.

B&L Biotech continues to expand its pipeline of innovative products while maintaining quality, excellence, and service to the worldwide dental community.

Obturation Devices

Ultrasonic Tips





Cordless Obturation devices

SuperEndo-α ²	4
Bata Mini / SuperEndo-β	6
BL-S Kondenser	8

Endodontic Ultrasonic Tip with Micro-projections

BL Tip	9
--------	---

Removal of Broken Instruments / Troughing & Irrigation

CK TIP	10
--------	----

Post Removal Tip

VIBRAPOST	10
-----------	----

Implant Scaler Tip

IS TIP	11
--------	----

Scaler Tip

S TIP	11
-------	----

Ultrasonic Tip Accessories

12

Endodontic Microsurgical Ultrasonic Tip with Micro-projections

JETIP	13
-------	----

Microsurgical Instruments

JETIP Instrument Basic Set	14
----------------------------	----

JETIP Instrument Suture Set	16
-----------------------------	----

Bendable Periosteal Elevator for Surgical Treatment

KimTrac	17
---------	----

Cordless Obturation Device for Optimal Warm Vertical Condensation

SuperEndo- α^2

**Maximizes user convenience**

Unique design that incorporates both cordless and ergonomic features.

Balance

Great weight distribution for ease of use.

Cordless

No limit on usage, reduces fatigue on hand and wrist.

Hexagonal keyholes

Six keyholes (in increments of 60 degrees) on the connecting joint of the plugger safely secure and prevent rotation of the plugger during use.

Extended battery time for operator

4 hours of continuous use on a single charge, which is equivalent to about 1 week of endodontic treatment in a busy practice.

Starter Kit

SuperEndo- α^2 with 3 pluggers. (#55/.06, #55/.08, #55/.10) adapter, powercord, charging base

Item Codes

Starter Kit: ASKB(Black), ASKW(White)

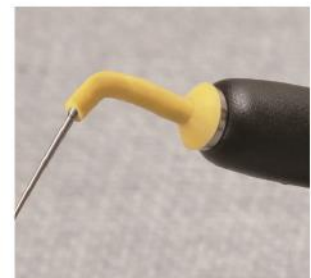
Main device: BAMB(Black), BAMW(White)

Charging console: BACCB(Black), BACCW(White)

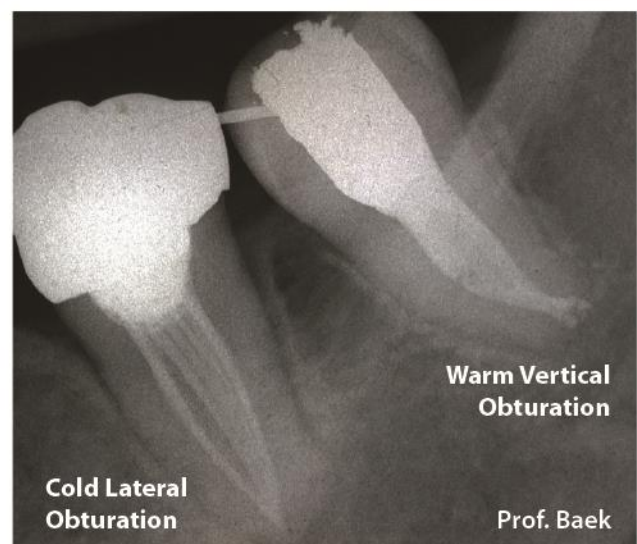
Battery enclosure: BABEB(Black), BABEW(White)

Battery: BAB

Plugger Protect Sleeve(10EA): BPPS



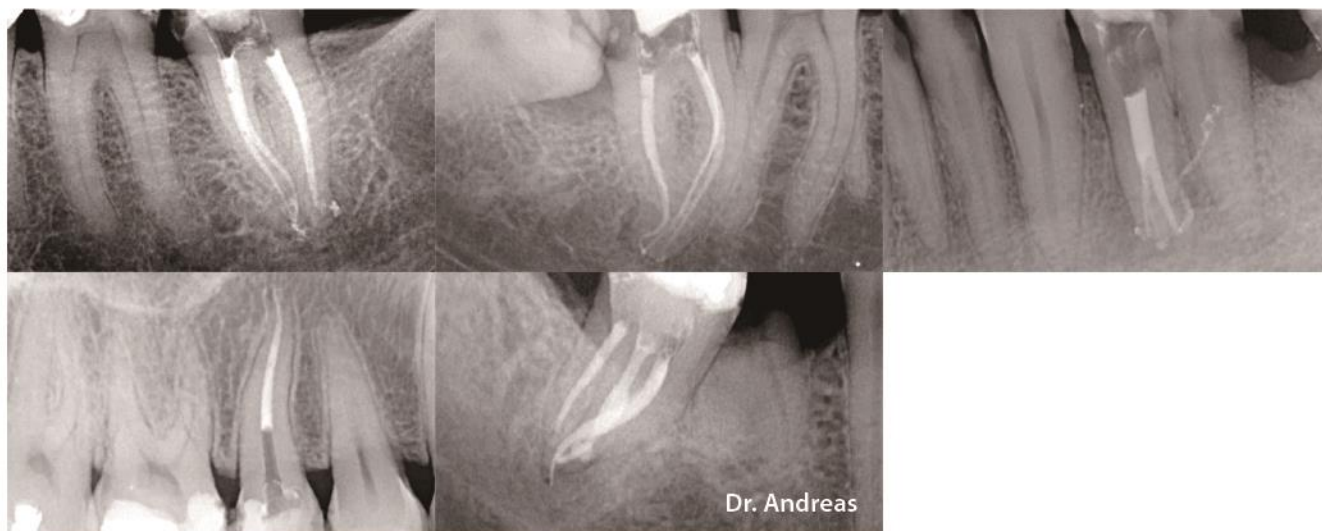
Dr. Gilberto Debelian

Cold Lateral
ObturationWarm Vertical
Obturation

Prof. Baek

Accessories for SuperEndo-α²**BL Plugger****Pluggers for SuperEndo-α²**

Wide variety to choose from: 13 items, including pluggers, spreaders, and a hot testing tip.



Accessories for B&L-α2

Paper Point / GP Point

Model	Size	Item Code	Packages
Paper Point	#15 / .04	PP1504	200 EA
	#20 / .04	PP2004	
	#25 / .04	PP2504	
	#30 / .04	PP3004	
	#35 / .04	PP3504	
	#40 / .04	PP4004	
	#50 / .04	PP5004	
GP Point	Assorted type (#25/.06, #30/.04, #35/.04)	AGP	60 EA
	#25 / .06	GP2506	
	#30 / .04	GP3004	
	#35 / .04	GP3504	
	#40 / .04	GP4004	

Cordless Obturation Device for Optimal Backfill

Beta Mini

**Unique design and engineering**

Incorporates 360 degree Swivel Needles, as well as cordless and ergonomic features, to maximize user convenience.

Balance

Great weight distribution for ease of use

Cordless

No limit on usage, reduces fatigue on hand and wrist

Secondary safety feature against accidental burns

Thermal protector cap prevents accidental burns from a hot needle or gutta percha.

Extended battery time for operator

4 hours of continual use on a single charge, which is equivalent to about 1 week of endodontic treatment in a busy practice.

Starter Kit

SuperEndo-β with needles.

(24mm/20G 2EA, 24mm/23G 4EA, 24mm/25G 2EA)

2 cleaning brushes, 3 thermal protectors, needle bender/wrench

1 regular GP, plunger, powercord, adapter, charging base

Item code

Starter Kit : BSKB(Black), BSKW(White)

Main device : BBMB(Black), BBMW(White)

Charging console : BBCCB(Black), BBCCW(White)

Battery : BBB

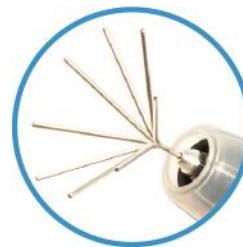
Thermal Protector(3EA) : BTP

Plunger assembly : BPA

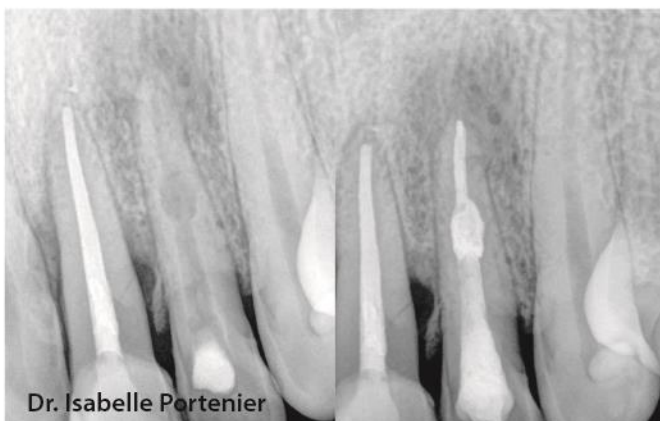
Cleaning Brush(2EA) : BCB

Needle protector sleeve(10EA) : BNPS

SuperEndo-β



Needles swivel for easy access



Dr. Isabelle Portenier



Dr. Lissette Ramirez

Accessories for SuperEndo-β

Needle



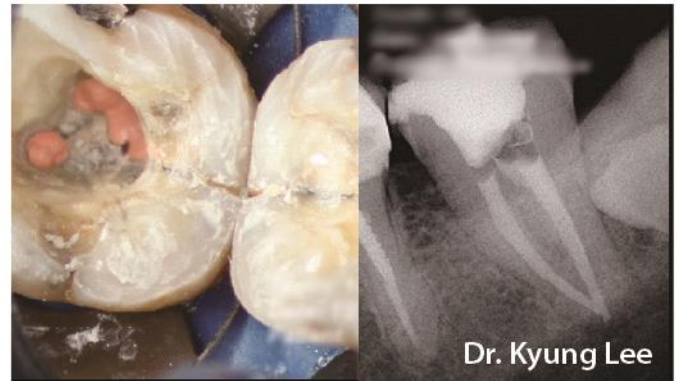
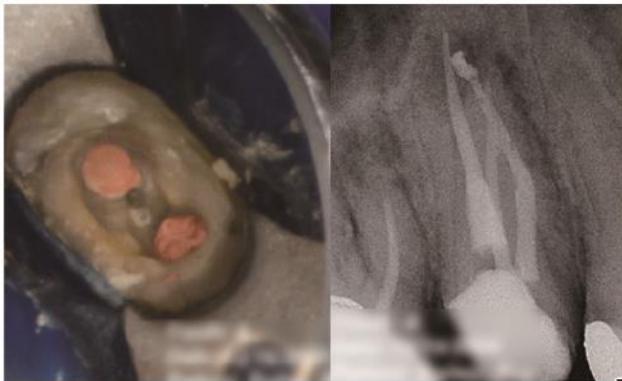
Needles for SuperEndo-β

Item Code	Gauge	Length
BSN2220	20 (0.82mm)	22 mm
BSN2420	20 (0.82mm)	24 mm
BSN2820	20 (0.82mm)	28 mm
BSN2123	23 (0.57mm)	21 mm
BSN2423	23 (0.57mm)	24 mm
BSN2823	23 (0.57mm)	28 mm
BSN2225	25 (0.45mm)	22 mm
BSN2425	25 (0.45mm)	24 mm
BSN2625	25 (0.45mm)	26 mm
BSN5020 (VET)	20 (0.82mm)	50 mm

*Swivel only



Item Code
Needle Bender/Wrench : BMT



Dr. Kyung Lee

Accessories for SuperEndo-β

Gutta Percha Pellet



Gutta Percha Pellets for SuperEndo-β

Item Code	Type	Quantity of GP
BGPSOFT	Soft Type	100 EA
BGPREG	Regular Type	100 EA
BGPBARD	Hard Type	100 EA

Condensation of Obturation Material

BL-S Kondenser

**Wide variety**

BL-S Kondensers are available individually or in a full set of 4.

Efficiency of use

Handles are color-coded by size allowing faster selection of the desired condenser.

Range of use

BL-S Kondensers are great for any type of canal anatomy.

Multipurpose features

The flexible end, which is made of nickel titanium, can be used for treatment in curved canals. The other end that is made of stainless steel, is ideal for compaction in the coronal and middle thirds of the canal.

Lightweight design

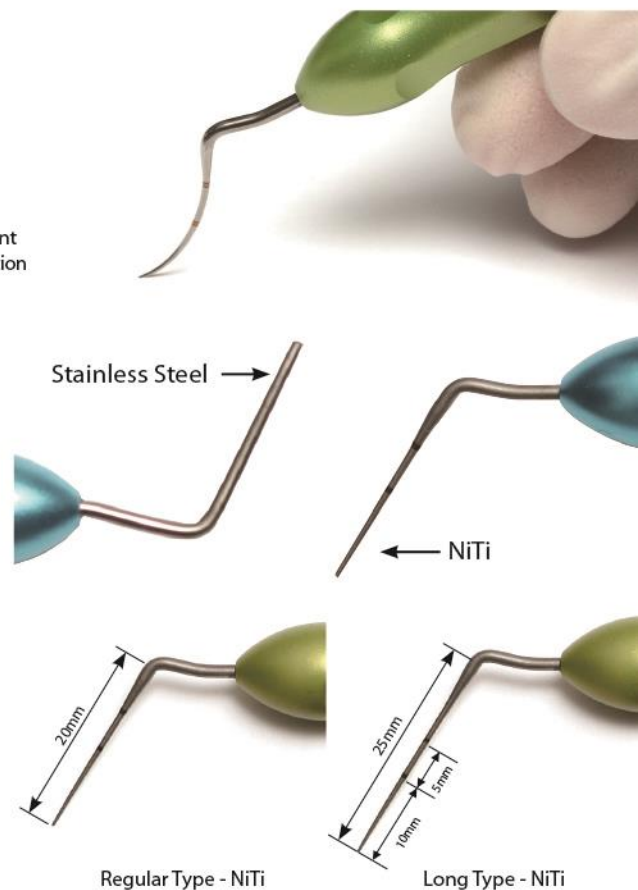
Handles are designed to fit comfortably into the natural grip of the user.

Increased control

Dimpled grips allow the condenser to be held firmly, increasing the amount of control the user has

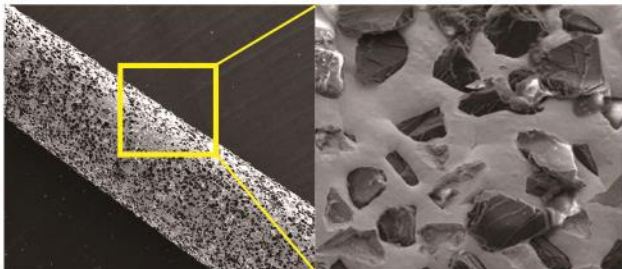
Autoclavable

Item Code	Product information
BCONSET / BCONSET Long Type	SET of 4 (35, 40, 50, 60)
BCON35 / BCON35 Long Type	35 NiTi / 70 SS
BCON40 / BCON40 Long Type	40 NiTi / 80 SS
BCON50 / BCON50 Long Type	50 NiTi / 100 SS
BCON60 / BCON60 Long Type	60 NiTi / 120 SS

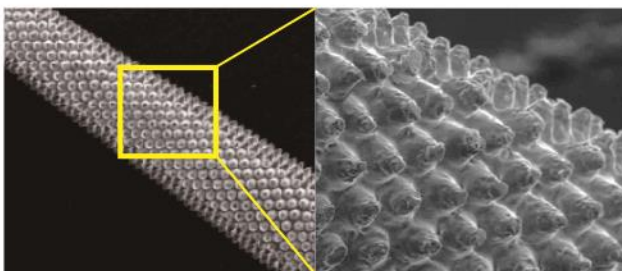


Endodontic Ultrasonic Tip with Micro-projection

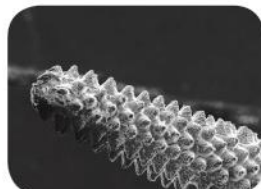
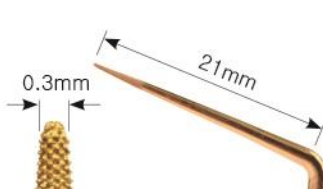
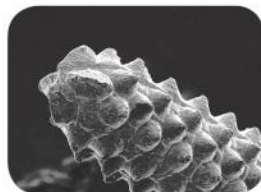
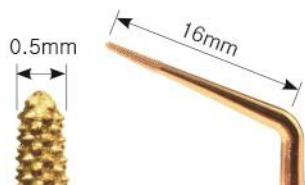
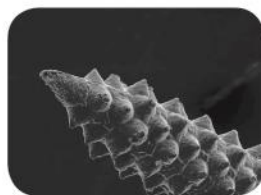
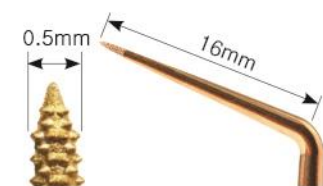
BL TIP



Diamond coated Tip



BL TIP with Micro-projections

**B&L non-surgical ultrasonic tip****Longevity and Safety with Micro-projections**

BL Tips have sharp abrasive micro-projections integrated onto the main body of the tip.

Unlike conventional diamond coated endodontic tips, whose coating wears off during surgery, BL Tips are more resilient and efficient in cutting

Manageable Elimination with a Variety of Shapes and Sizes

The ends of the BL Tips come in a variety of shapes and sizes, making it convenient for the doctor to effectively control the amount of dentin removal.

100µm Micro-projections : ideal for removing larger quantities of dentin.

50µm Micro-projections : ideal for more precision-based refinement.

Versatility

BL Tips are useful not only in accessing the root canal, but also in enlarging the coronal aspect of the root canal because the end of the tip works in every direction.

Item Code

Starter Kit : BLSKA(BL1,3,5 Satelec), BLSKE(BL1,3,5 EMS)

BL-1 : BL1A, BL1E

BL-3 : BL3A, BL3E

BL-5 : BL5A, BL5E

Appropriate power level

BL-1	BL-3	BL-5
SATELEC®	20% · 30%	Under 20%
EMS®	10% · 20%	Under 10%

E-Type not available for sale in the US.

BL-1 (100µm Micro-projections)

Removal of pulp stone, calcified dentin

Location of the MB2 canal and hidden canals

Removal of gutta percha and paste materials

BL-3 (100µm Micro-projections)

Use at a higher power, higher speed

Removal of secondary dentin and pulp stones

Resistance to breakage

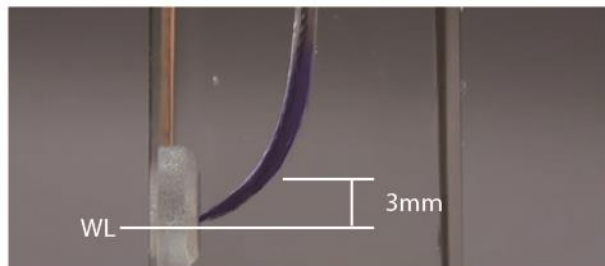
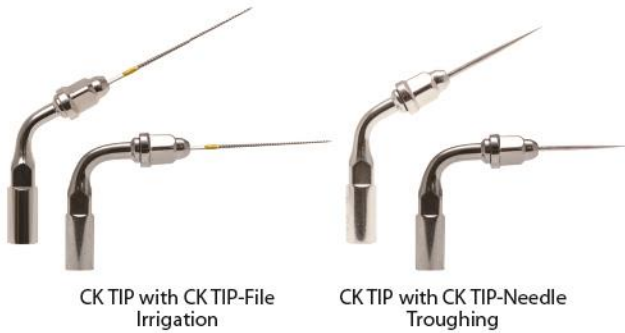
BL-5 (50µm Micro-projections)

Smaller & longer than BL-1

Sharper and longer shape allows efficient preparation of the coronal half of the canal and creates a space for the insertion of a file.

Removal of Broken Instruments / Troughing & Irrigation

CK TIP



Optimal use for CK TIP-File - 3mm above WL (Working Length)

For ultrasonic energy in a root canal

Ultrasonic vibration through a file ensures an efficient cleaning of the root canal system through acoustic micro-streaming.

Item Code	Compatibility	Bent Angle
CK1E	EMS scaler	120°
CK1A	SATELEC scaler	
CK2E	EMS scaler	90°
CK2A	SATELEC scaler	

E-Type not available for sale in the US.

CK Tip-File

Irrigation File #20

Item Code	Recommended Power Level
CKF20	10%

CK TIP-Needle

Item Code : CKN

Removal of separated files.

Useful in removing dentin. (troughing)

Isthmus control.

Before working with the Vibrapost, use the CK TIP-Needle to trough around the post allowing the Vibrapost to work more efficiently.

Post Removal Tip

VIBRAPOST



The best choice for removing a post from a root canal

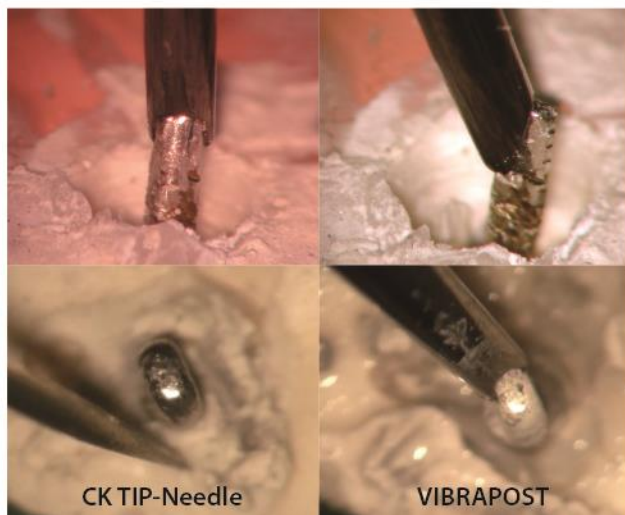
The most efficient shape to constantly deliver the highest ultrasonic energy.

Item Code	Recommended Power Level
VP-A(SATELEC)	60% Power
VP-E(EMS)	

E-Type not available for sale in the US.

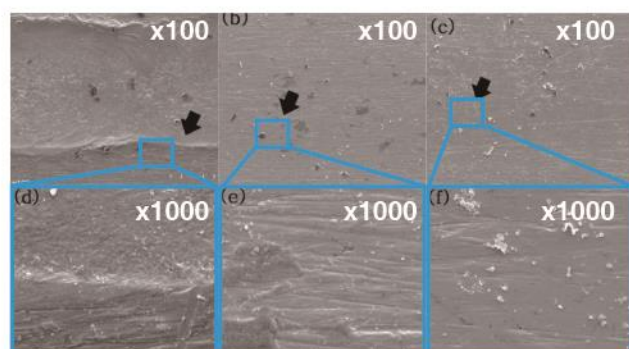
Caution!

In order to avoid potential damage to the periodontal ligament from excessive heat, be sure to work with water and refrain from engaging the post for more than 15 seconds at a time.



Implant Scaler Tip

IS TIP



Stainless Steel Tip

Carbon Tip

B&L IS Tip

Reference : Hyon-Woo Seol, Seong-Joo Heo, "Effect of New Ultrasonic Tip on Several Dental Material Surface, The class of dental prosthesis", Dental school of Seoul National University

The dependable choice for peri-implant tissue management

Why choose B&L's implant scaler tip?

Metallic ultrasonic tip designed for scaling polished implant surfaces.

Compatible with electric piezo unit.

Optimal scaling efficiency with minimal abrasiveness to the external polished surface of the implant.

Ideal periodontal management of implant.

Safer and more efficient than other plastic and titanium implant curettes.

Ideal for removing of residual cement.

Sharpness

Avoids excessive opening of the gingival sulcus.

Accessibility

Provides easier access to the distal lingual gingiva of a molar.

Bendable tip point can be used to reach hidden areas.

Usage

Ideal for periodontal maintenance of the implant.

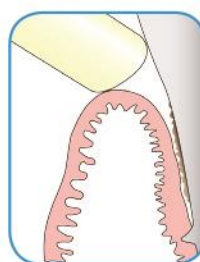
Ideal for treatment of peri-implantitis.

Ideal for removal of excess cement.

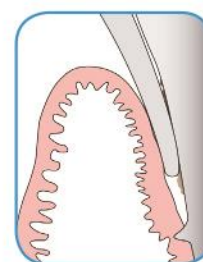
Disposable

Item Code : STS5A(SATELEC compatible)

STS5E(EMS compatible)



Standard TIP



B&L IS TIP

Scaler Tip

S TIP



"I was amazed with the efficiency of B&L scaler tip. It is the best scaler tip that I have used thus far."

- Dr. Sean Kim (Private Practice in New Jersey; Alumni of Columbia University)

Item Code : STS1A(SATELEC compatible), STS1E(EMS compatible)

STL1E(Long type, Only EMS compatible)

STS2A(SATELEC compatible)

Excellent Durability

Long Lifespan: The advances of the new tip allow for longer usage and maintenance of the integrity of the scaler tip's shape and function without deformation.

The S Tip can be sterilized by chemical sterilization or autoclaving without compromising the quality and the integrity of the tip.

Excellent Anti-Corrosive Properties

The S Tip has anti-corrosive properties that prevent degradation of the tip even after being exposed to 5% sodium hypochlorite for 30 days. Any other conventional tip will slowly dissolve under this condition.

Biocompatibility and Optimal Efficiency

The S Tip allows optimal scaling results with less hassle. Conventional scaler tips can easily damage the external surface of a tooth due to the tips' rigidity and lack of resilience. However, the S Tip is composed of an advanced, resilient material that resembles the external surface of a tooth. This unique property of the S Tip provides excellent biocompatibility with the surface of a tooth due to its optimal scaling efficiency and minimal abrasiveness.

Ultrasonic Tip Accessories



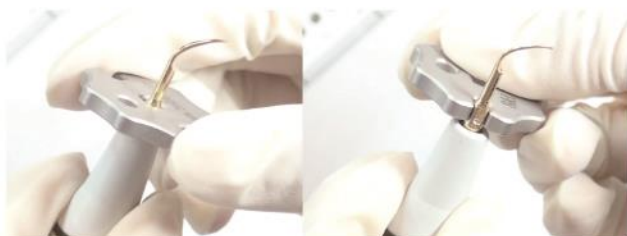
Wrench for Ultrasonic Tips

Item Code : WR01



Jig for JETIP bendable type

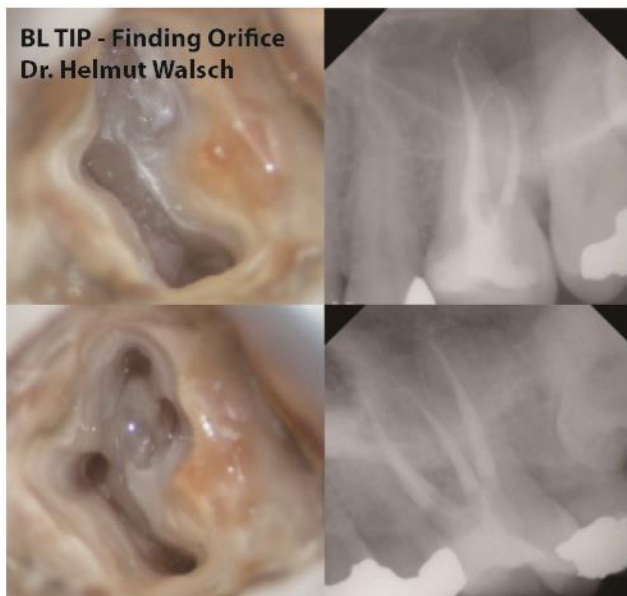
Item Code : JTBJ



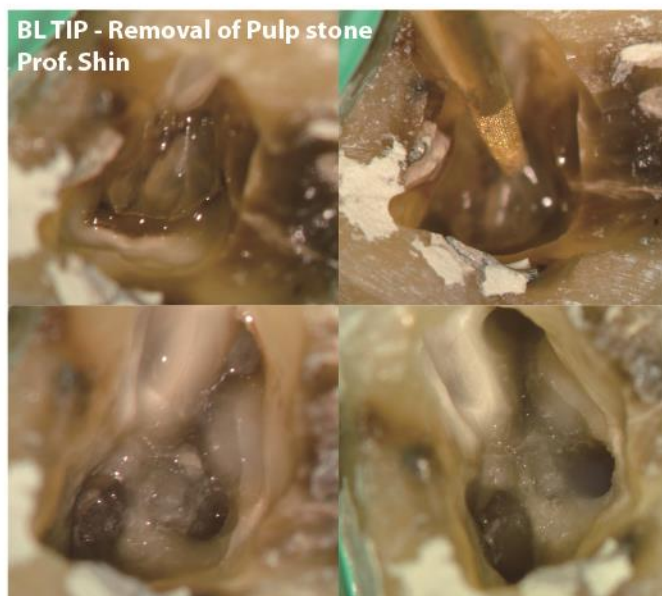
B&L Ultrasonic Tips

Clinical Cases

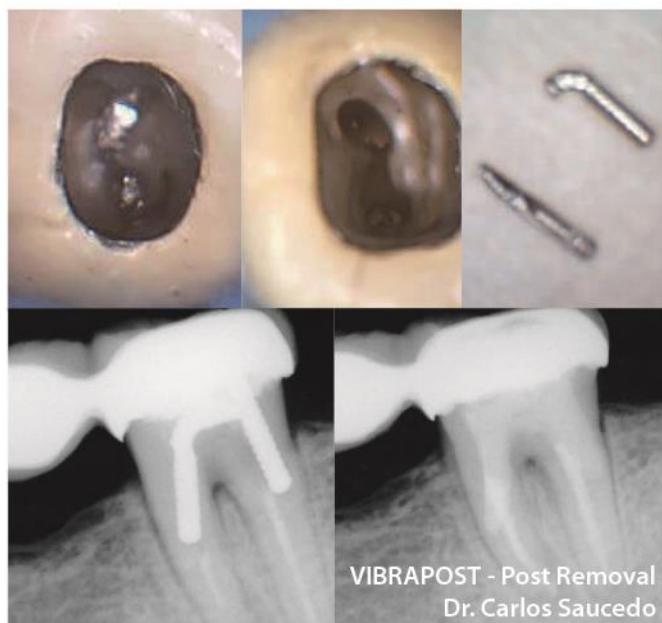
BL TIP - Finding Orifice
Dr. Helmut Walsch



BL TIP - Removal of Pulp stone
Prof. Shin



JETIP - Apicoectomy
Dr. Marga Ree



VIBRAPOST - Post Removal
Dr. Carlos Saucedo

Microsurgical Ultrasonic Tip with Micro-projection

JETIP



Bendable Apical Surgery Tips

JETip is an apico surgery tip that allows clinicians to bend the tip to any length and angle to suit their surgical needs.

Longevity and Safety with Micro-projection

JETips have sharp, abrasive micro-projections integrated onto the main body of the tip.

Unlike conventional diamond coated endodontic tips, whose coating wears off during surgery, tips with micro-projections are more resilient and efficient in cutting.

Versatility

JETips have a variety of shapes and sizes, so users can effectively control the amount of gutta percha and dentin removal.

They remain stable during the removal of gutta-percha.

Bending Jig

Optional Length and Angle

The Bending Jig is made of a soft material in order to provide clinicians the freedom to bend the jetip to different angles and lengths without damaging the micro-projections.

The Bending Jig has five depths (3, 4, 5, 6, and 7mm) allowing clinicians to bend the tip to different lengths.

One aperture may be used up to 2-4 times.

Item Code

Full set : JT2FA(Satelec), JT2FE(EMS)

JT-2 : EMS

JT2SE(Straight), JT2LE(Left), JT2RE(Right), JT2BE(Bendable)

Satelec

JT2SA(Straight), JT2LA(Left), JT2RA(Right), JT2BA(Bendable)

Appropriate power level



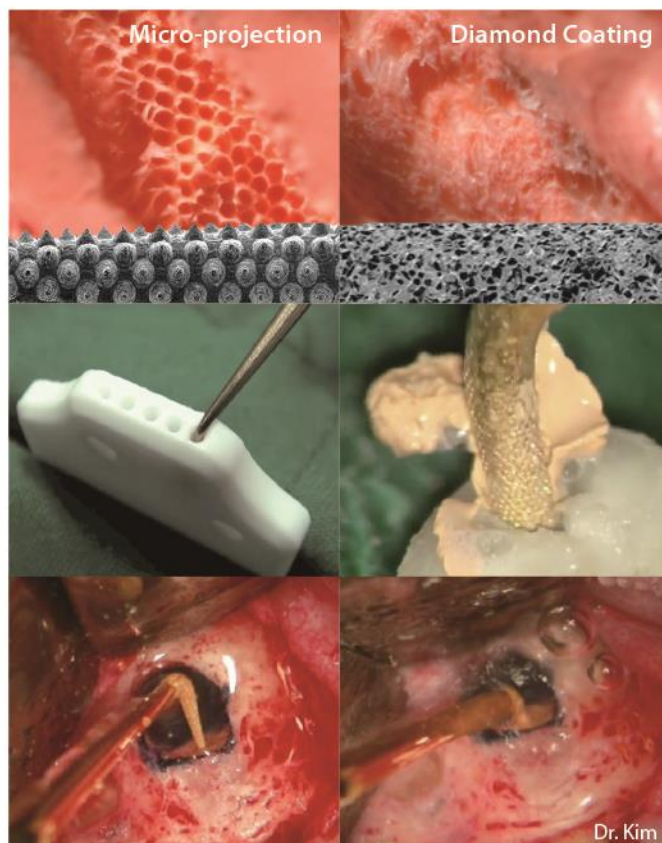
SATELEC®	10% - 20%
EMS®	Under 10%

E-Type not available for sale in the US.



Bending jig for JETIP bendable type

Item Code : JTBJ



JT-2 series for Micro-Surgery (Anterior, Posterior)

Bent Body Angle: 150° (All JT-2 series tips)

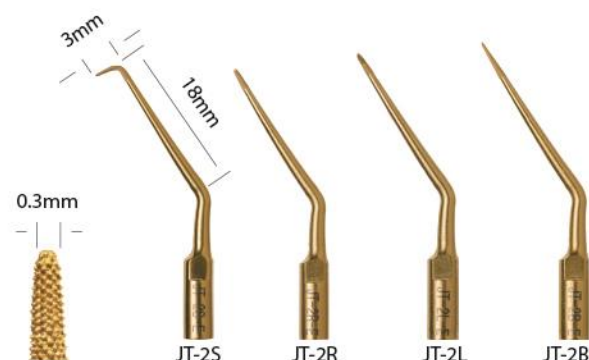
Micro-projection Size: 50µm

JT-2B represents the popular bendable tip. This tip allows clinicians to bend the tip ONLY once in one direction to any length and/or angle to suit their clinical needs, using the JETip bending jig.

JT-2S is bent 90° down at the tip of the bent body

JT-2L is bent 90° to the left at the tip of the bent body

JT-2R is bent 90° to the right at the tip of the bent body



Microsurgical Instruments

JETIP Instrument Basic Set



JETIP Microsurgical Instrument

Color Coded by Procedural Steps

Comfortable Grip

Sleek Design

Basic Kit (Aluminum or Titanium Handle) Item Code :JISSB / TJISSB


Color Coded by Procedural Steps



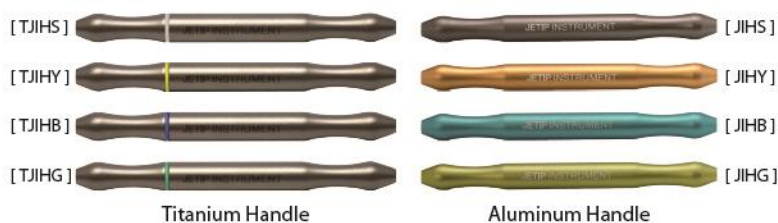
Silver	JX1, JX2, JX5, JEX, JPP
Gold	JE1, JE2, JE3, JE4
Blue	JC1, JC2, JC3, JC4, JC9, JC10, JC11, JC12, JC13, JC14, JC15, JC16
Green	JM1, JM2, JM3, JM4, JB2, JP3, JP6, JP7
Micro Mirror	JIMM1, JIMM2, JIMM3, JIMMH
MTA Pallet	MTAP
B&L Wrench	WR01
Cassette	JISC2

Essential Kit (Aluminum or Titanium Handle) Item Code : JISSE / TJISSE


Silver	JX1, JX2
Gold	None
Blue	JC15, JC16
Green	JB2, JP3, JM3, JM4, JP6, JP7
Micro Mirror	JIMM1, JIMM2, JIMM3, JIMMH
MTA Pallet	MTAP
B&L Wrench	WR01
Cassette	JISC2

JETIP Instrument Handle

Titanium Handle Set & Aluminum Handle Set


Deluxe Kit (Aluminum or Titanium Handle) Item Code : JISSD / TJISSD


List of JISS Tips

Silver Examination and Diagnosis



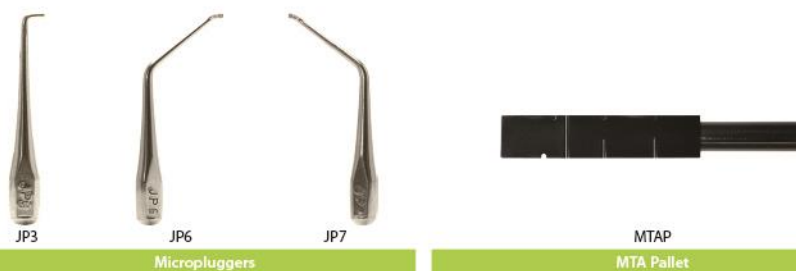
Gold Soft Tissue Management and Tissue Elevation



Blue Curettes and Debridement



Green Retro Grade Filling



Microsurgical Instruments

JETIP Instrument Suture Set

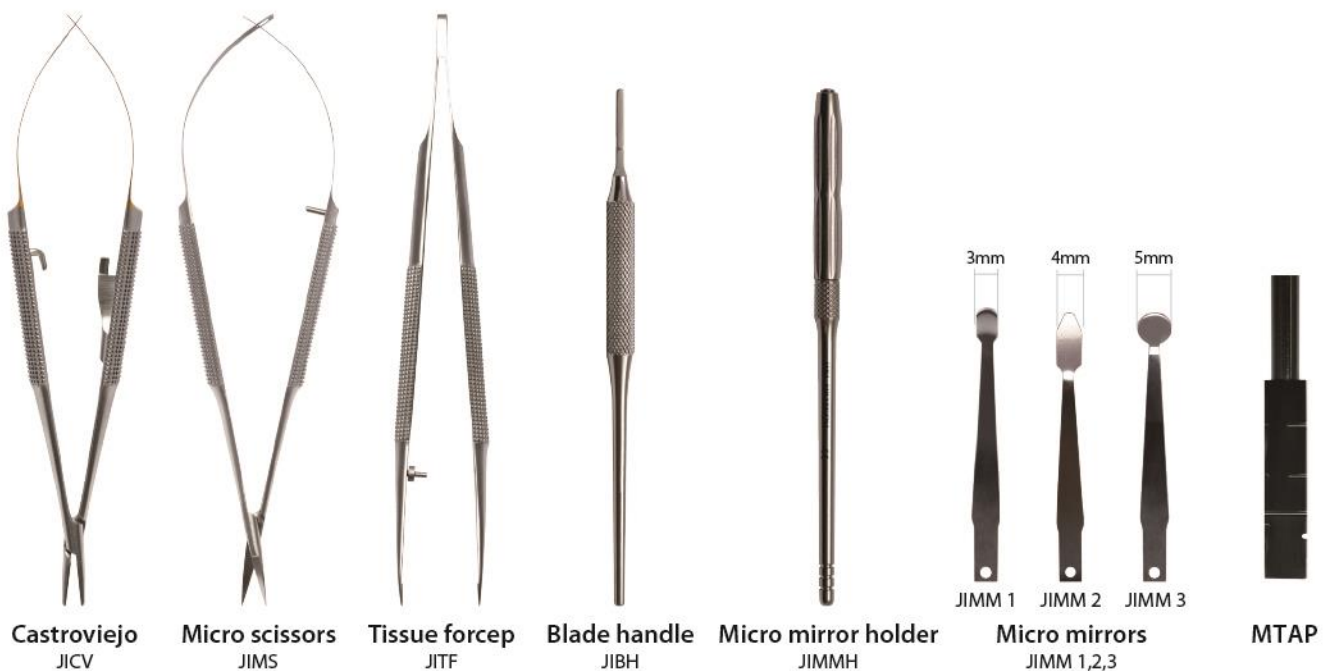


Item Code : JISSS

Suture Set for Apicoectomy

Set of most used instruments - include a castroviejo, micro scissor, tissue forcep, and blade handle, three micromirrors, MTAP as well as the micromirror handle. With high durability, it can be used longer despite many cleanings and sterilizations.

The ergonomic grip helps a dentist perform surgery longer and relieve fatigue.

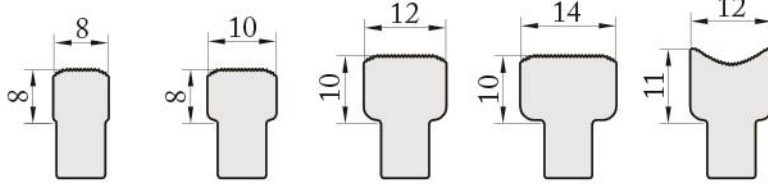


Bendable Periosteal Elevator for Surgical Treatment

KimTrac

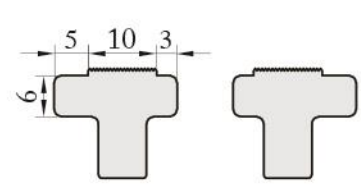


Endo/Micro



Nitinol type	KTRM1N	KTRM2N	KTRM3N	KTRM4N	KTRM5N
SUS type	KTRM1S	KTRM2S	KTRM3S	KTRM4S	KTRM5S

Perio



KTRP1N	KTRP2N
KTRP1S	KTRP2S

Shape Memory

After being bent, NiTi models can be returned to its original shape at 60°C or higher

Serrated Edges

Stably secures the cortical bone plate, regardless of its shape, due to the saw-toothed wheel at the end of the KimTrac.

Various Angles

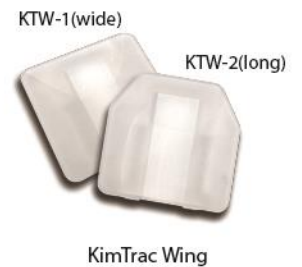
Consists of three types of angles that make contact with the bony plate. It adheres well to both anterior and posterior locations by adjusting the left-right angle.

KimTrac WING

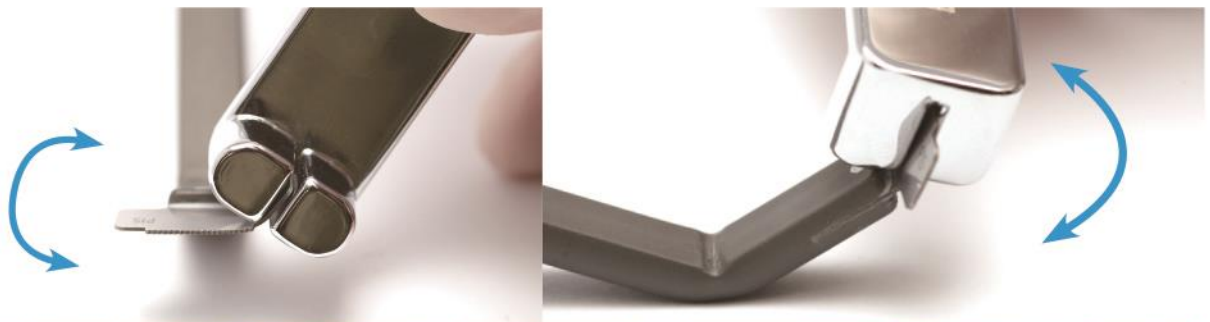
Autoclavable KimTrac Wings ensure easy flap retraction with highly improved visibility and accessibility of the operation field.

Item Code : KTW1(Wide type 10EA), KTW2(Long type 10EA), KBJ(KimTrac bending jig)

* KimTrac wings and the KimTrac bending jig are included with the KimTrac.



KimTrac Wing



www.bnlbio.com



Come and check out our website!
Product information, clinical cases, video clips, global partner information and more!

Contact Information

Global Sales

Bruce D. Shefsky
bdshefsky@bnlbio.com

Latin America Sales

Dr. Lissette Ramirez
drlissetteramirez@bnlbio.com

Repair Center

B&L Biotech USA
customerservice@bnlbio.com



View video clips at <http://www.youtube.com/bnlbio>

B&L Biotech USA, Inc.

3959 Pender Drive, #105, Fairfax, VA, 22030 USA
TEL. +1 (703) 272- 7507
FAX. +1 (703) 272- 7598





ТзОВ "Прем'єр-Дентал"
вул. Варшавська, 69 "Б"
Львів, Україна, 79020

Premier Dental Ltd
Varshavska St, 69 bldg. "B"
Lviv, Ukraine, 79020

+38 032 259 04 44
+38 044 222 85 53
+38 097 445 66 73
+38 099 533 10 95
+38 093 427 68 79

www.premier-dental.com.ua

vk.com/premierdental
www.facebook.com/PremierDental2005



Where Innovation Meets Excellence

B&L Biotech USA, Inc.

3959 Pender Drive, Suite 105, Fairfax, VA 22030, USA

TEL: +1 (703) 272-7507 | FAX: +1 (703) 272-7598

WEBSITE: www.bnlbio.com