

DTE®



301 Patents; 60 among these are Invention Patents; Exported to 131 countries

Leader of Ultrasonic Scaler Manufacturer Globally

DTE

Far Ahead in Ultrasonic Scaler Production and Sales Globally
Leader of LED Curing Light Export Volume in China

Scan and Login website
for more information



28
YEARS
1989-2017

CATALOGUE

Add: Information Industrial Park, National High-Tech Zone,
Guilin, Guangxi, 541004 P. R. China
Tel: Europe Sales Dept.: +86-773-5873196, +86-773-2125222
North America, South America &
Oceania Sales Dept.: +86-773-5873198, +86-773-2125123
Asia & Africa Sales Dept.: +86-773-5855350, +86-773-2125896
Fax: +86-773-5822450
E-mail: woodpecker@glwoodpecker.com, sales@glwoodpecker.com
Web: <http://www.glwoodpecker.com>

EC REP MedNet GmbH
Borkstrasse 10 · 48163 Muenster · Germany

2017 5.0Edition

GUILIN WOODPECKER MEDICAL INSTRUMENT CO., LTD.

Owner&CEO
Wu Xunxian



我是一个中国人，我会用我的一生
做好一件事，一件能让外国尊重，能让中
国人自豪的事。
吴勋贤 2008.2.19

Introduction of Woodpecker Company

Concentration

27 years' concentration on R&D dental products, **7** product categories, **85%** domestic market share, and exported to **129** countries and regions.

Innovation

300 employees, **75%** of them have got college degree or above, **18.6%** full-time R&D, **301** proprietary intellectual property rights, **60** invention patents.

Scale

26841 m² existing manufacturing and researching base, **80000** m² base under construction. **17.6** million USD invested to build full-automatic processing and testing center.



Birdview of Company



Office Building



Library



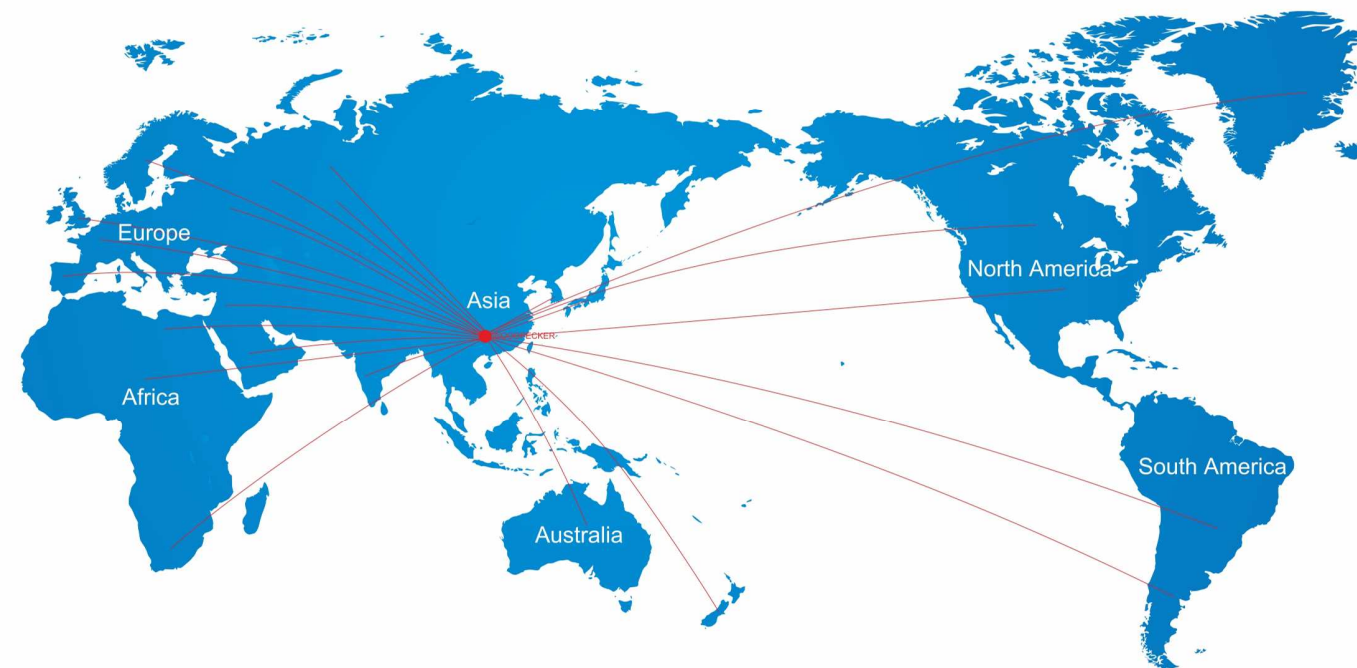
Lecture Hall



Show Room



Woodpecker products have been exported to 131 countries around the world



Europe 41 countries

- Germany, United Kingdom, France, Spain, Italy, Russia, Switzerland, Poland, Portugal, Luxembourg, Bosnia and Herzegovina
- Czech Republic, Sweden, Slovenia, Slovakia, Serbia, Croatia, Belarus, Romania, Bulgaria, Malta
- Greece, Denmark, Holland, Ireland, Ukraine, Hungary, Austria, Belgium, Finland, Latvia
- Estonia, Albania, Macedonia, Moldova, Lithuania, Kosovo, Iceland, Norway, Andorra, Montenegro

Oceania 2 countries

- Australia, New Zealand

Asia 44 countries

- Japan, South Korea, India, Indonesia, Singapore, Philippines, Thailand, Malaysia, Burma, Laos, Vietnam
- Nepal, Bangladesh, Mongolia, Kazakhstan, Turkmenistan, Kyrgyzstan, Uzbekistan, Palestine, Tajikistan, North Korea
- Afghanistan, Iran, Saudi Arabia, Qatar, Oman, UAE, Iraq, Pakistan, Yemen, Lebanon, Turkey

America 21 countries

- USA, Canada, Mexico, Brazil, Argentina, Chile, Peru, Venezuela, Columbia, Dominican Republic, Cuba
- Salvador, Bolivia, Guatemala, Uruguay, Ecuador, Panama, Nicaragua, Honduras, Paraguay, Puerto Rico

Africa 19 countries

- Egypt, Morocco, South Africa, Sudan, Tunisia, Libya, Nigeria, Kenya, Zimbabwe, Algeria
- Madagascar, Mauritius, Ghana, Burkina Faso, Senegal, Reunion, Cameroon, Zambia, Ethiopia

All staff of Woodpecker



27 years of brand heritage

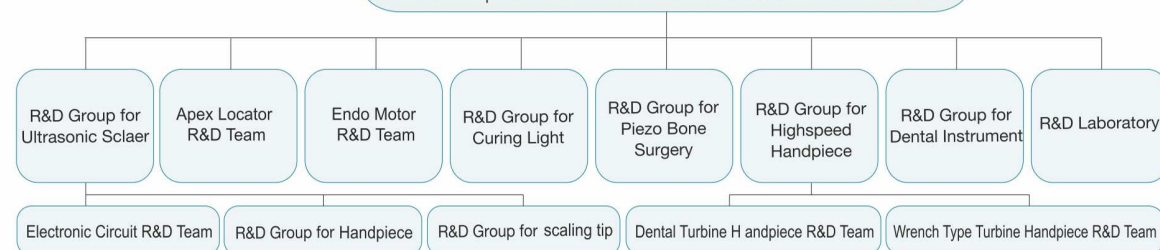
Made in China German quality

High-quality Durable Innovative

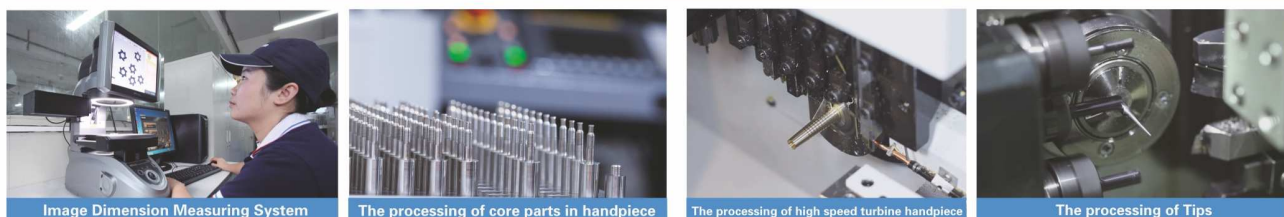
First-class R & D team in dental industry

Constituted of 11 teams specializing on each products in Woodpecker. Woodpecker now has 60 professional engineers focusing on researching and developing of new technic in dental industry. And our target is to satisfy our customers by innovative and safe products

Woodpecker R & D center's structure

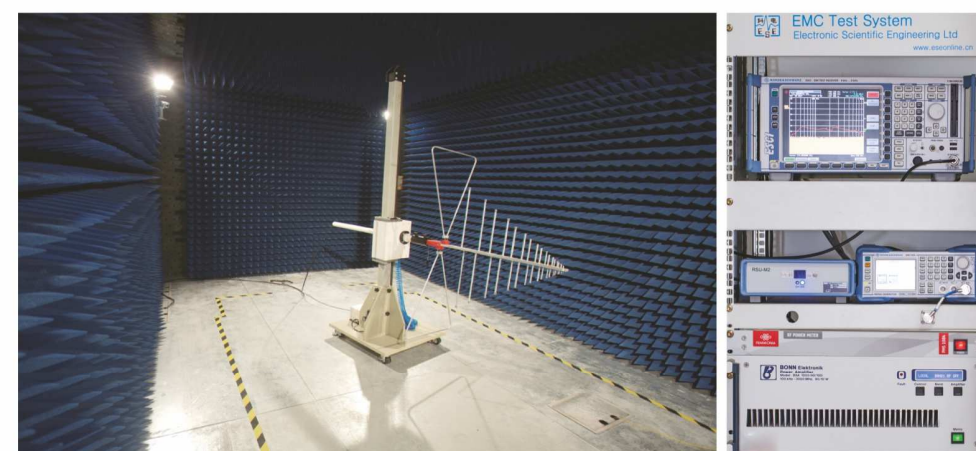
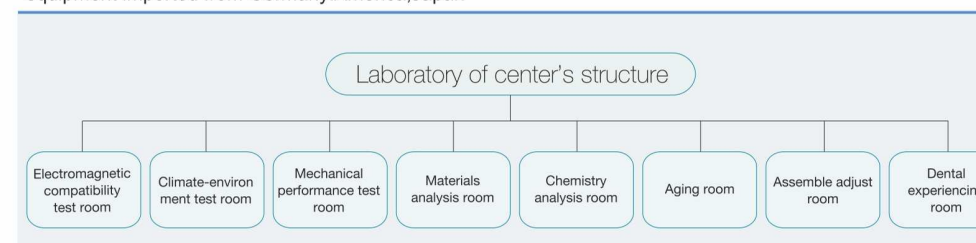


Advanced processing equipment in dental industry



- Invest 12.4 million USD to construct the CNC center. Covering an area of 1500 square meters Automatic processing equipment original from Japan
- The production of every core part is supported by equipment which worth more than a million

With an area of 1280m², valued 5.5 million USD, Woodpecker's laboratory is equipped with advanced equipment imported from Germany, America, Japan



EMC Tester system The only EMC Test System in Chinese dental industry which costs 0.76 million USD



Mechanical environmental laboratory Simulate various extreme mechanical environments to ensure high-quality of products.



Climate Environmental Laboratory Simulate different extreme climate environments to ensure high-quality of products.



Direct reading spectrometer
Germany-imported, to detect components of elements, improving quality of raw material



Roundness measuring instrument
Japan-imported, high degree of accuracy(0.01um)



Roughness detector
Japan-imported, to test the roughness of metal surface



Energy dispersive X-ray fluorescence spectrometer
To detect the harmful material, keeping with the demand of EU standard

CONTENS

How to check Authenticity



*The new anti-forgery query system is only applicable to products produced since 11st, September, 2014.

Harm of fake products

WOODPECKER and **DTE** are two brands of Guilin Woodpecker medical instrument company. Recently, growing fake ultrasonic scaler handpieces, tips and curing lights are produced and sold on the market, which do harm to users' interest. On this issue, We Woodpecker will crack down fake products and provide safe and secure medical instrument products.

1. Harm of fake ultrasonic scaler handpieces.

- 1.1 Fake handpieces with poor-designed inner structure can lead to frequent power leakage, which may cause medical accidents.
- 1.2 Material used on fake handpieces don't pass biocompatible test, which can easily lead to irritability and poisoning.
- 1.3 Fake handpieces have quality problems of overheating, non-vibration and cracking, which cause ultrasonic scalers out of order.
- 1.4 Fake handpieces can't be compatible with ultrasonic scalers, thus leading to circuit burn out.

2. Harm of fake scaler tips.

- 2.1 Fake tips are low in toughness, poor in resistance and easy to crack, thus easily cause medical accident.
- 2.2 Fake tips' screw threads are roughly processed, which can cause handpiece's screw loosening and cracking.
- 2.3 Material used on fake tips is inferior and easily rusting, which can cause infection of patient.
- 2.4 Fake tips have problem of poor water-spraying, bad screw-thread fit and water leaking, which leads ultrasonic scalers work wrongly.

3. Harm of fake curing light.

- 3.1 Fake curing light's batteries can cause self-ignite, even explosion with poor-quality material and no complete charging management
- 3.2 Light intensity of fake curing light is not constant, when battery level goes down under 60%, it would lead to incomplete solidification of resin, causing secondary dental caries.

DTE	New Arrivals	1-6
	Piezoelectric Ceramics Painless Periodontal	1-6
DTE	Ultrasonic Scaler	7-16
	U600	7-10
	D7 LED	11-12
	D5 LED D3 LED	13
	D2 LED D1	14
	Built-in Scaler	15
	Tips advantage	16
DTE	Apex Locator	17-20
	Apex Locator's Advantages	17-18
	DPEX III	19
	DPEX I	20
DTE	Curing light	21-28
	LUX E LUX V	21-22
	LUX VI LUX I LED.H	23-24
	Curing Lights' Advantages	25-26
	ILED	27-28
DTE	Dental Turbine Handpiece	29-34
	Dental Handpieces' Advantages	29-30
	New model	31-34
	Models of Dental Handpieces	35
DTE	Ultrasonography	36-38
	Ultrasonography introduce	36
	Ultrasonography Advantages	37-38
DTE	Tips	39-49
	Comparison of Scaler Tips	39-40
	Function of Scaler Tips	41-49
	Spare Parts	50-52

New Arrivals

Ultrasonic Scaler

Apex Locator

Curing light

Dental Turbine Handpiece

Ultrasonography

Tips

WORLDWIDE LAUNCHING — *PT 3*

PIEZOELECTRIC CERAMICS PAINLESS PERIODONTAL TREATMENT DEVICE

18 invention patents 116 national patents

28 years of research on ultrasonic scaling

New Arrivals

1

New Arrivals

2

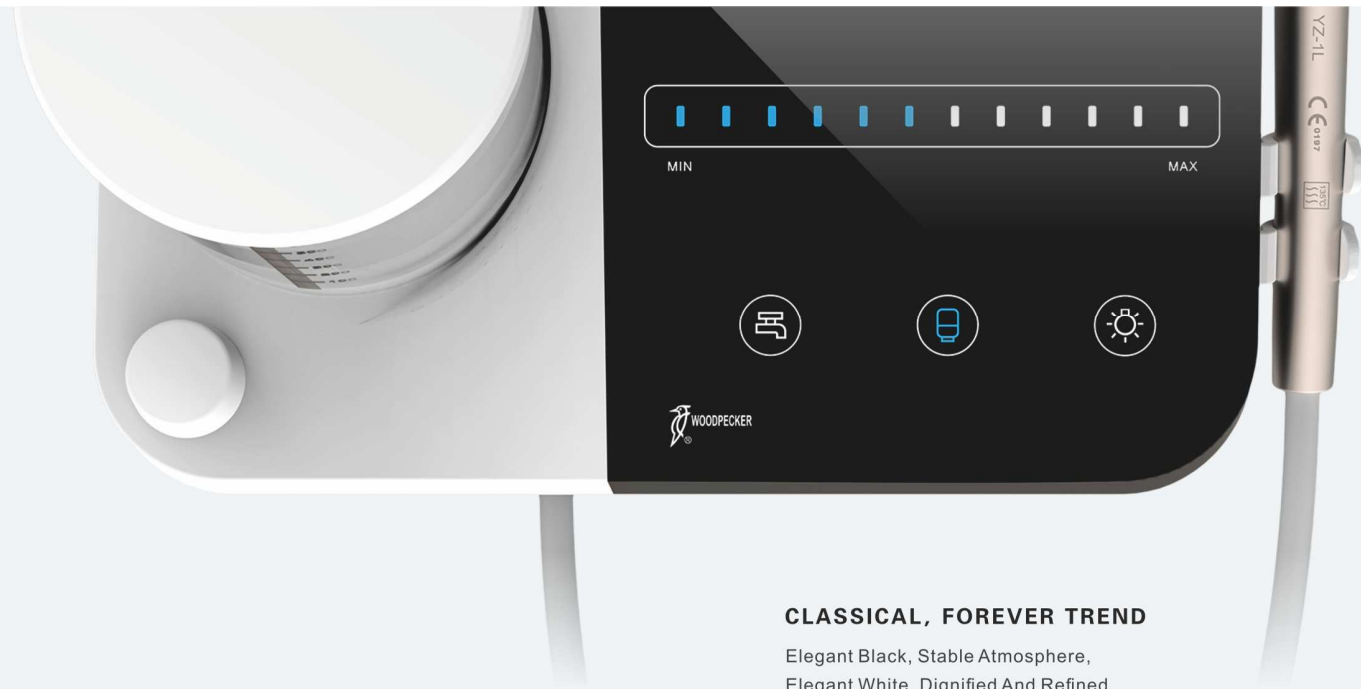


New Arrivals

3

New Arrivals

4



CLASSICAL, FOREVER TREND

Elegant Black, Stable Atmosphere,
Elegant White, Dignified And Refined.
Tai Chi Astro-Tech China Ancient Color,
Black And White, Hard And Soft.
Body Design Have Great Originality, Smooth Lines, Unique Styles.

COMFORTABLE, THE INEVITABLE TREND

Extremely Simple, Ultimate Bright
Dual; External & Automatic Water Supply, Clarity & Easy Control.

TECHNOLOGY , REDEFINE COMFORT

In the new era of Science & Technology,
We return it by Scientific And Technological Achievements,
Supra gingival and Sub gingival Scaling,
Whole Process, Comfortable And Painless.
Deep cleaning of dental plaque, dental calculus.

AUTOMATIC WATER SUPPLY SYSTEM

Changing The Water Is More Convenient To Less Redundant Steps.
Enhance Your Work Efficiency.
Hydrogen peroxide, Sodium Hypochlorite,
Chlorhexidine And Other Special Chemicals are available.
Clear 20ML Scale Line, Convenient Proportioning Liquid.



SCALING ONLY, NONDESTRUCTIVE QUALITY

Circular Vibration, distract the impact force of the Tip & Tooth.
360°Hassle Free Scaling, Better Polishing Effect.
The tip Vibration amplitude is between 20-60µm,
which is equivalent to 1/3 of the diameter of a hair.
Achievements of many years Painstaking research,
For the comfort of your escort.



Smart touching technique system

- Clear control panel
- Ultra-sensitive
- Waterproof design

Detachable LED handpiece

- Surprising efficiency
- Unique assembling technology, long useful life, far ahead far ahead from competitors

Periodontal treatment tips

- Special design for periodontal treatment, convenient for clinic operation
- Titanium scaling tips, no injury to cementum

Easy to change water



LED handpiece, better visibility



Ultra-sensitive control, waterproof design



Equipped with two professional disinfection kits



Treatment effect:



Before treatment



Under treatment



After treatment



One month later

PT3 main specifications:

Frequency: 28000Hz	Tips hardness: 30HRC
Vibration amplitude: 20~60um	Treatment depth: 14mm

Equipped with: 2 handpieces+10 tips

New Arrivals

5

PT 5

PAINLESS PERIODONTAL Piezoelectric Ceramics Painless Periodontal Treatment Device

Smart touching technique system

- Clear control panel
- Ultra-sensitive
- Waterproof design

Detachable LED handpiece

- Surprising efficiency
- Unique assemble technology, durable using life, far ahead of the other similar products

Periodontal treatment tips

- Special design for periodontal treatment, convenient for clinic operation
- Titanium scaling tips, no injury to cementum

New Arrivals

6



ENDO SCALING FAST & COMPLETE



After enlarging by hand, there are thick smear layer and a few amount of debris on root canal surface.

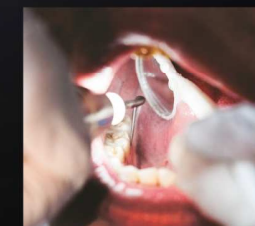
Easy to change water



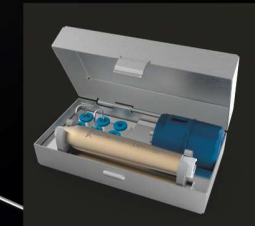
Ultra-sensitive control, waterproof design



LED handpiece, better visibility

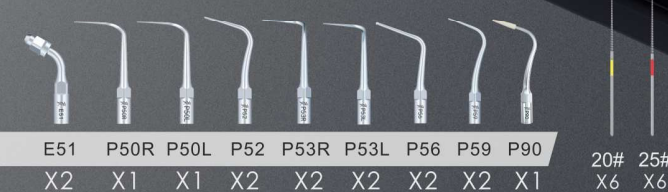


Equipped with two professional disinfection kits



main specifications:

Frequency: 28000Hz – 42000Hz	Tips hardness: 30HRC
Vibration amplitude: 20~60um	Treatment depth: 14mm



E51



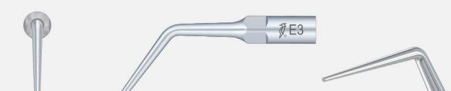
120° angle holder: Swishing anterior teeth coordinated with swished file after root canal preparation, used in E mode.

E52



95° angle holder: Swishing posterior teeth coordinated with swished file after root canal preparation, used in E mode.

E3



Using ultrasonic melt to press gutta-percha for lateral pressure, used in E mode without water.

E3D



Diamond-coated(40µm) instrument for removing calcification and bad filling material in root canal, used in E mode.

E6



Special material

Thin and flexible, used for removing foreign body in deep canal.

E7



Special material

Thin and flexible, used for removing foreign body in 1/3 canal.

P4D



Diamond coated(40µm), used to remove the calcification in the coronal third of the root canal and used in E mode.

P50L



Used for subgingival scaling, periodontal pocket probing and root planing
Applicable areas: labial proximal surface of upper front teeth, lingual proximal surface of upper front teeth, buccal interproximal in B quadrant, and lingual interproximal in C quadrant

P50R



Used for subgingival scaling, periodontal pocket probing and root planing
Applicable areas: labial proximal surface of upper front teeth, lingual proximal surface of upper front teeth, lingual interproximal in B quadrant

P52



Used for subgingival scaling, periodontal pocket probing and root planing
Applicable areas: lingual and lip side of Front teeth and lower front teeth, buccal side in A quadrant and maxillofacial side in B quadrant

P53L



Used for subgingival scaling, periodontal pocket probing and root planing
Applicable areas: labial proximal surface of upper front teeth, lingual proximal surface of upper front teeth, buccal interproximal in B quadrant, and lingual interproximal in C quadrant

P53R



Used for subgingival scaling, periodontal pocket probing and root planing
Applicable areas: labial proximal surface of upper front teeth, lingual proximal surface of upper front teeth, lingual interproximal in B quadrant

P56



Use for removing big calculus, no hurt to gum when scaling in the gingival margin
Applicable areas: lingual and lip side of Front teeth and lower front teeth, buccal side in A quadrant and maxillofacial side in B quadrant

P59



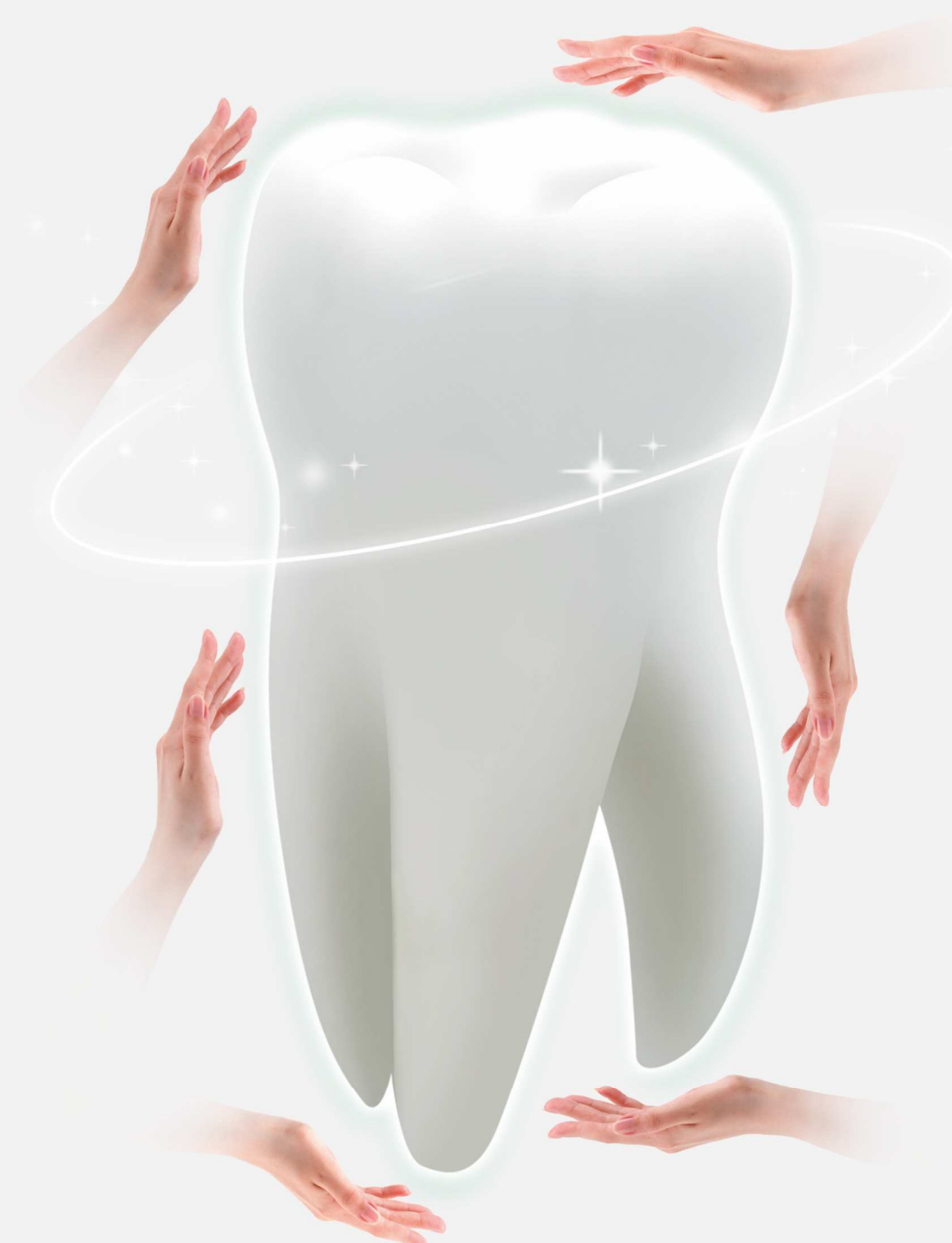
Use for subgingival scaling, periodontal pocket probing and root planing
Applicable areas: lingual and lip side of Front teeth and lower front teeth, buccal side in A quadrant and maxillofacial side in B quadrant

P90



Implant maintenance
Clean implants and restorations
Make sure water can reach the top of tip.
Power should be no more than level 7, or the peek head may be broken

SPOILING YOU SO MUCH !



D600

INTELLIGENT POWER OUTPUT
EXPERIENCE PAINLESS TREATMENT

SMART TOUCHING
TECHNIQUE SYSTEM

Clear control panel

Ultra-sensitive

Waterproof design

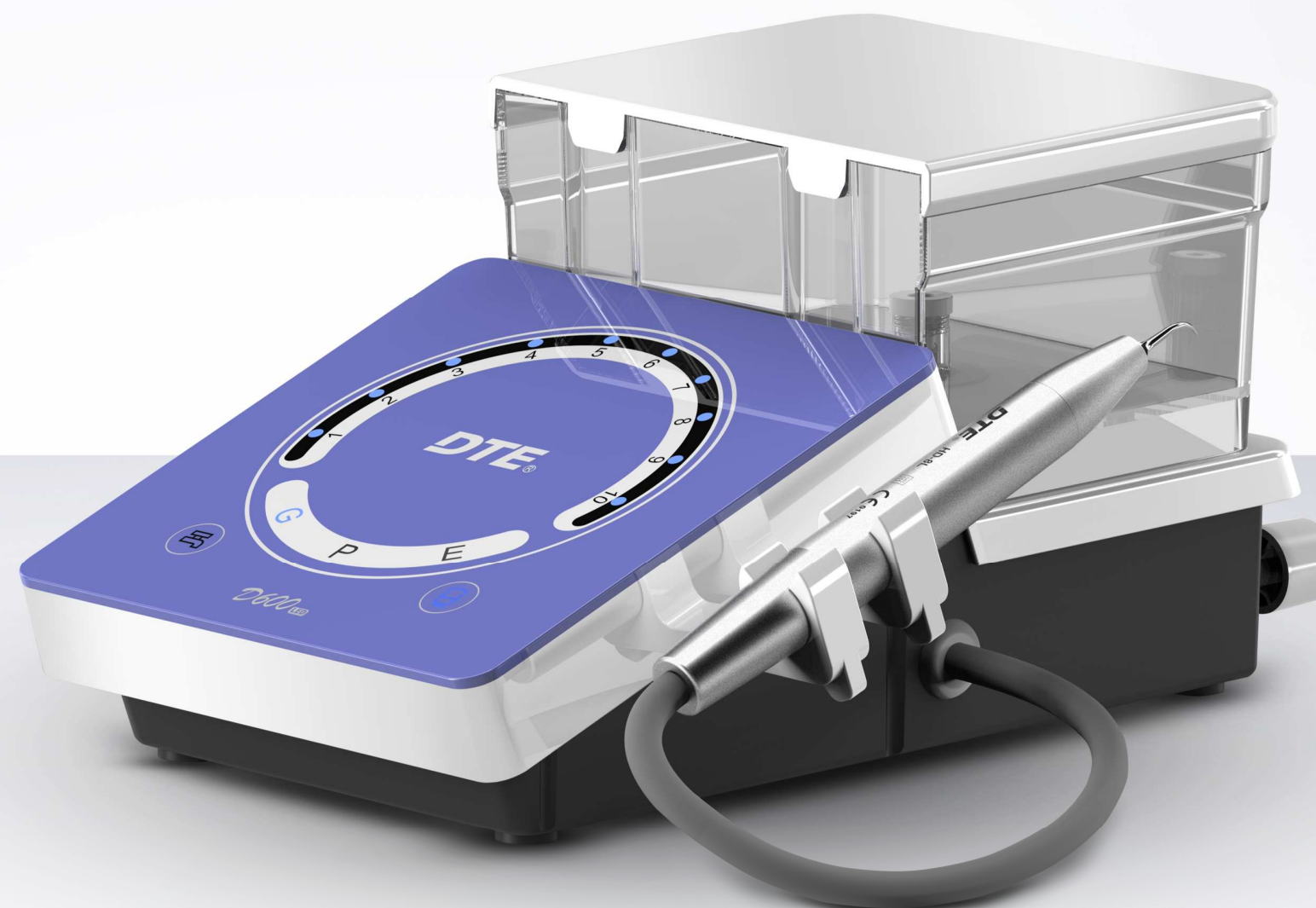
Supragingival scaling



Subgingival scaling



Endo canal cleaning



Ultrasonic
Scaler

9

Ultrasonic
Scaler

10



D600 Ultrasonic Scaler

FAR AHEAD IN ULTRASONIC SCALER PRODUCTION AND SALES GLOBALLY

28 years focusing on technological innovation, leading brand for Scaler in the world

Woodpecker scaler has applied for 113 National Patents and 17 National Invention Patents

HIGH QUALITY HANDPIECE

Shell of the handpiece is made of special imported plastic from America, which can be autoclaved under high temperature and pressure without cracking or deformation.

Original handpiece sealing technique, reliable and durable.

Ergonomics design, more comfortable in use.

Ultrasonic Scaler
13

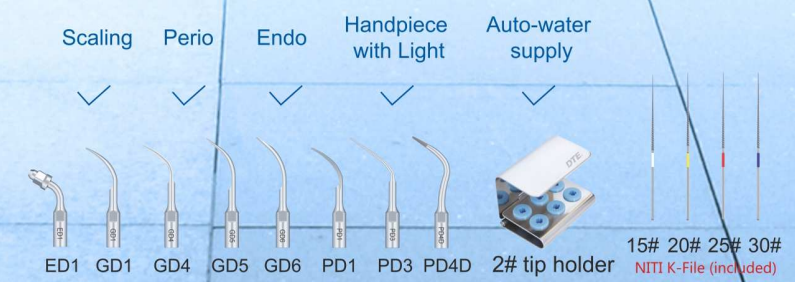
EXPERT IN ROOT CANAL CLEANING

Ultrasonic Scaler
14



D7 LED

Power input	110V~50Hz/60Hz 220-240V~50Hz/60Hz
Main unit input	24V~50Hz/60Hz 1.3A
Output power	3W~20W
Frequency	28kHz±3kHz
Main unit weight	1.17kg
Transformer weight	1kg
Dimensions	241mm×193mm×97mm



- Anti-rot material applied to internal water line system, clinical solutions are applicable for automatic water supply mode, improving the performance of perio and endo function dramatically.
- Detachable handpiece with light, better visibility; new sealing technique applied to handpiece, patients feel more comfortable.
- Automatic degenerative feedback, constant power output, more comfortable scaling.



D5 LED

- Detachable handpiece with light, better visibility.
- Automatic degenerative feedback, constant power output, more comfortable scaling.

Power input 110V~50Hz/60Hz 220-240V~50Hz/60Hz
 Main unit input 24V~50Hz/60Hz 1.3A
 Output power 3W~20W
 Frequency 28kHz±3kHz
 Water pressure 0.1bar~5bar (0.01MPa~0.5MPa)
 Main unit weight 0.65kg
 Transformer weight 1kg
 Dimensions 188mm×159mm×81mm

Industrial design patent No.:CN 200830300446.1



ED1T GD1T×2 GD2T GD4T PD1T

Scaling	Perio	Endo	Handpiece with Light	Auto-water supply
✓	✓	✓	✓	✗

D2 LED

- The handpiece sleeve can be autoclaved.
- Accurate feedback control and constant power output, ensure a more comfortable feeling to patients.
- Built-in power source, easy to install.

Power input 110V~50Hz/60Hz 220-240V~50Hz/60Hz
 Output power 3W~20W
 Frequency 28kHz±3kHz
 Water pressure 0.1bar~5bar (0.01MPa~0.5MPa)
 Main unit weight 1.56kg
 Dimensions 227mm×158mm×75mm

Industrial design patent No.:CN 201230465752.7



GD1×3 GD2 PD1



D2 LED Plus

Scaling	Perio	Endo	Handpiece with Light	Auto-water supply
✓	✓	✗	✓	✗

D3 LED

- Detachable handpiece with light, better visibility.
- Microcomputer control, automatic frequency tracking.
- Automatic degenerative feedback, constant power output, more comfortable scaling.

Power input 110V~50Hz/60Hz 220-240V~50Hz/60Hz
 Main unit input 24V~50Hz/60Hz 1.3A
 Output power 3W~20W
 Frequency 28kHz±3kHz
 Water pressure 0.1bar~5bar (0.01MPa~0.5MPa)
 Main unit weight 0.66kg
 Transformer weight 1kg
 Dimensions 198mm×134mm×80mm

Industrial design patent No.:CN 200830300447.6



GD1×2 GD2 GD4 PD1

Scaling	Perio	Endo	Handpiece with Light	Auto-water supply
✓	✓	✗	✓	✗

D1

- Two colours optional.
- Sealed handpiece.
- Automatic frequency tracking.
- Automatically search the best working frequency.
- Accurate feedback control and constant power output, ensure a more comfortable feeling to patients.

Power input 110V~50Hz/60Hz 220-240V~50Hz/60Hz
 Main unit input 24V~50Hz/60Hz 1.3A
 Output power 3W~20W
 Frequency 28kHz±3kHz
 Water pressure 0.1bar~5bar (0.01MPa~0.5MPa)
 Main unit weight 0.62kg
 Transformer weight 1kg
 Dimensions 203mm×138mm×94mm

Industrial design patent No.:CN 200830300433.4



GD1×2 GD2 GD4 PD1



Scaling	Perio	Endo	Handpiece with Light	Auto-water supply
✓	✓	✗	✗	✗



D6 LED

- Scaling ✓
- Perio ✓
- Endo ✓
- Handpiece with Light ✓
- Auto-water supply (Optional) ✓

- Detachable handpiece with light, better visibility, autoclavable.
- Scaling, perio, endo.
- Automatic frequency tracking.
- Accurate feedback control and constant power output, ensure a more comfortable feeling to patients.

Power input	220 - 240V~ 50Hz/60Hz 150mA
Main unit input	24V~ 50Hz/60Hz 1.3A 5V~ 50Hz/60Hz 200mA(Automatic Water Supply System)
Output power	3W~20W
Frequency	28kHz±3kHz
Water pressure	0.01MPa to 0.5MPa
Adapter weight	1kg
Dimensions	193.5mm×133mm×75.8mm



Built-in scaler SPECIAL DESIGN FOR DENTAL UNIT!

V3 LED

- Detachable handpiece with light, autoclavable.
- Automatic frequency tracking.
- Accurate feedback control and constant power output, ensure a more comfortable feeling to patients.



Main unit input	24V~50Hz/60Hz 1.3A
Output power	3W~20W
Frequency	28kHz±3kHz
Water pressure	0.1bar~5bar (0.01MPa~0.5MPa)
Main unit weight	0.2kg
Dimensions	74mm×56mm×38mm

V3 LED
(Detachable handpiece HD-7L)

V3
(Detachable handpiece HD-7H)



V2 LED

- Detachable handpiece with light, autoclavable.
- Automatic frequency tracking.
- Accurate feedback control and constant power output, ensure a more comfortable feeling to patients.



Main unit input	24V~50Hz/60Hz 1.3A
Output power	3W~20W
Frequency	28kHz±3kHz
Water pressure	0.1bar~5bar (0.01MPa~0.5MPa)
Main unit weight	0.2kg
Dimensions	74mm×56mm×38mm

V2 LED
(Detachable handpiece HD-7L)

V2
(Detachable handpiece HD-7H)



V1

- Sealed handpiece.
- Automatic frequency tracking.
- Accurate feedback control and constant power output, ensure a more comfortable feeling to patients.



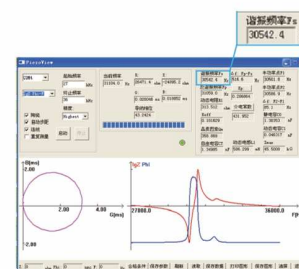
Main unit input	24V~50Hz/60Hz 1.3A
Output power	3W~20W
Frequency	28kHz±3kHz
Water pressure	0.1bar~5bar (0.01MPa~0.5MPa)
Main unit weight	0.2kg
Dimensions	74mm×56mm×38mm

V1
(Detachable handpiece HD-1)

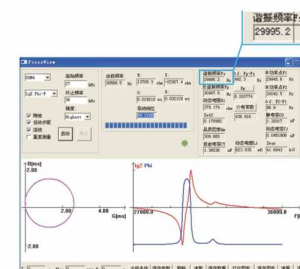


Perfect compatibility of tip

The working frequency range of S brand scaler is 28000Hz~36000Hz



The working frequency of DTE tip working on S brand scaler



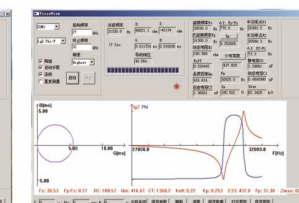
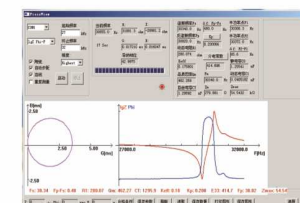
The working frequency of S brand tip working on S brand scaler

The working condition for DTE tip on S brand scaler is perfect

Perfect compatibility

DTE brand: resonant frequency 30.340 kHz

French brand S: resonant frequency 30.530 kHz

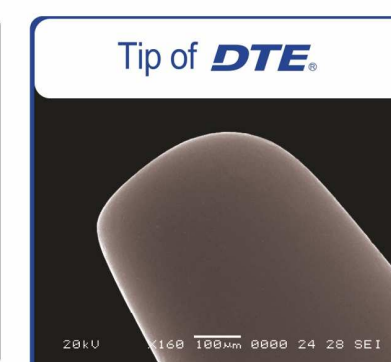


Technical data of DTE detachable handpiece and French brand S handpiece is the same. Handpiece of both brand can be exchanged perfectly.

Smooth tip, No injury to the teeth

Selecting high-qualified medical materials which is durable and wear-resistant, adopting most advanced laser drilling technology, undergoing

35 strict production processes and **5** quality inspections.



160 times enlarge





APEX LOCATOR

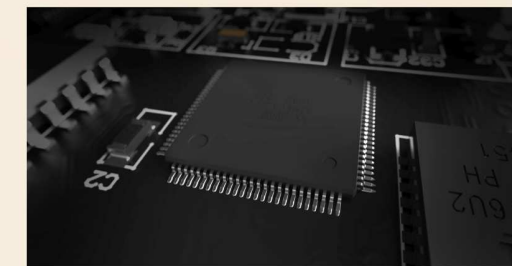
DPEX III GOLDEN STANDARD

25 National Patents 8 Invention Patents

Clinical data matching,
The accuracy rate has been improved to

97.71%

Upgraded chip, real-time response, the sensitivity has been improved double
Innovative algorithm, multi-frequency measurement, and anti-interference.



**THE ACCURACY CONTRAST AMONG
DTE, AMERICAN BRAND D AND
JAPANESE BRAND S**

Method: Prepare 97 teeth of pulpitis and apical paradentitis, total 175 root canals. After finishing the initial root canal preparation, use the Apex Locators of DTE, American brand D and Japanese brand S separately to measure the length of root canals, and combine the X-Ray film to test, finally compare the accuracy of the three types of Apex Locators.

Group	QTY of tested root canal	QTY of accurate results	Accuracy Rate
DTE	175	171	97.71%
American brand D	175	171	97.71%
Japanese brand S	175	171	97.71%

Cited Reference: Gu Yuan Ping
In vivo accuracy of three electronic root canal length measurement devices: Dentaport ZX, Woodpex III and ProPex II



DPEX III

New Upgrade

- LCD screen, the trajectory of the file can be clearly shown with different colors.
- Multi-frequency apical positioning technology, avoiding the influence of subjective factors for measurement results.
- Measurement results will not be affected by tooth type, root canal internal environment.
- Rechargeable lithium battery.
- Adjustable viewing angle.

DPEX I

- Clear Image.
- Multi-frequency apical positioning technology, avoiding the influence of subjective factors for measurement results.
- Adjustable viewing angle.



Battery 3.7V/750mAh
 Power consumption ≤0.5W
 Screen 4.5"LCD
 Main unit weight 385g
 Dimensions 138mm×77mm×107mm

Industrial design patent No.:CN 201130378913.4



Battery 3 pieces AAA alkaline batteries
 Power consumption ≤0.3W
 Screen 4.9"LCD
 Main unit weight 395g
 Dimensions 105mm×142mm×40mm

Industrial design patent No.:CN 201130378728.5

X-Cure

Beyond Curing

Curing light

23



> TOP ITALIAN DESIGNER' S DESIGN

Each & Every Specifics Is Perfect ;
Seek of Perfection, Charm Of Science & Technology ;
Dynamic Lines , Build Competitive Products ;

> ALL-METAL INTELLIGENT HEAT RADIATION MANAGEMENT SYSTEM

Integrated metal body , No Heat Radiation Worries ;
To Escort Life Span Of LED, Extend Working Time ;

> OLED DISPLAY SCREEN

Using the latest color display technology
A Clear Intuitive Interface
Experience The Power Of The Screen


> HIGH POWER LED THIRD GENERATION OF WIDE SPECTRUM

Output Wavelength Range 385nm~515nm ;
More Matching PPD, TPO, Ivocerin And Other Photo-initiator ;
Solidify All Resins in the Market ;



Curing light

24

CURING LIGHT
iLed 

Cure 2mm resins in one second

light intensity up to **2500** mw/cm²



CONSTANT POWER OUTPUT

Born for restoration

1 SEC FOR CURING

Go quicker than ever

360° ROTATABLE HEAD

Extend the possibility

ERGONOMICS DESIGN

optimize the hand-grip use

EXPERT IN LED CURING LIGHT

13 years professional technology, 39 patents, 7 Invention Patents
Global sales over 600,000 units!

1 SEC
FOR CURING
Go quicker than ever

BASIC DATA:

Power input	AC100v-240v 50hz/60hz
Light intensity	1000mw/cm ² ~2500mw/cm ²
Net weight	278g
Dimensions:	25mm×25mm×240mm

3 SECONDS FOR CURING

Up to 1600mW/cm²
HIGH INTENSITY

LUX E Plus

- Especially suitable to solidify agglomerant of orthodontic bracket, veneer and post.
- Wireless. The battery can be replaced.
- Three working modes: Low, Middle, High.
- Constant light intensity. The solidification effect is not affected by the consumption of remaining power.
- Large capacity battery. A full charge can be used for more than 400 times continuously under 10s working time mode.
- Low standby power consumption with 70 days' standby time.



Industrial design patent No.:CN 200930321063.7

Power input	AC100V to 240V 50Hz/60Hz
Light output	800mW/cm ² -1600mW/cm ²
Net weight	141g
Dimensions	260mmX40mmX50mm

LUX V

- Large capacity battery. A full charge can be used for more than 300 times continuously under 10s working time mode.
- Low standby power consumption with twenty days' standby time.
- Constant light intensity. The solidification effect is not affected by the consumption of remaining power.
- Power indicator.
- Suitable for both right or left hand operation.



Industrial design patent No.:CN 201130028451.3

Power input	AC100V to 240V 50Hz/60Hz
Light output	1000mW/cm ² -1200mW/cm ²
Net weight	85g
Dimensions	263mmX31mmX23.5mm

MINI S Curing light

- Woodpecker, High Quality Manufactured.
- Comfortable ergonomic design.
- Simple one-button operation.
- More than 300 times 10-second cures.
- Constant light intensity output.

NEW



Battery	3.7V/1400mAh
Dimensions	230mm×26mm×30mm
Power Input	~100V-240V 50Hz/60Hz
Power Output	4.2V --- 1A

EXPERT IN LED CURING LIGHT !

14 years professional technology,
41 patents, 8 Invention Patents
Global sales over 600,000 units !

LUX VI

- Ergonomic design, small and convenient
- Special light hood and holder design, high-effectively filtering light
- Three working modes: Full, Ramping, Pulse.
- Time setting: 5s, 10s, 15s, 20s
- A full charge can be used for over 300 times. (10s/time)
- Constant light intensity, the solidification effect is not affected by the consumption of remaining power.
- With wire or wireless. It can run directly on commercial power supply whilst the battery runs out.



Optional colors



Industrial design patent No.: CN 201230421494.2

Power input	AC100V to 240V 50Hz/60Hz
Light output	1000mW/cm ² - 1200mW/cm ²
Net weight	100g
Dimensions	234mmX26mmX26mm

LUX I

- 220 degrees head rotation.
- Disposable sleeve: Save autoclaving time.
- Easy-to-change battery.
- Automatic memory. Avoid setting frequently.
- Stable output of light intensity, the solidification effect is not affected by the consumption of remaining power.
- Efficient transfer from electricity into light. A full charge can be used more than 400 times continuously under 10s working time.

Industrial design patent No.: CN 201230045664.1

Power input	AC100V to 240V 50Hz/60Hz
Light output	850mW/cm ² - 1000mW/cm ²
Net weight	230g
Dimensions	79.5mmX79.5mmX261mm



LED.H ORTHO

A TOUCH AND DONE, ALL FOR ORTHO.



A TOUCH AND DONE, ALL FOR ORTHO.

LED.H | ORTHODONTIC EXPERT

Curing light

31

Rapid orthodontic 3 seconds for curing

Intensity light 1,800mW/cm², only 3 seconds to solidify the bracket.

Beveled light guide

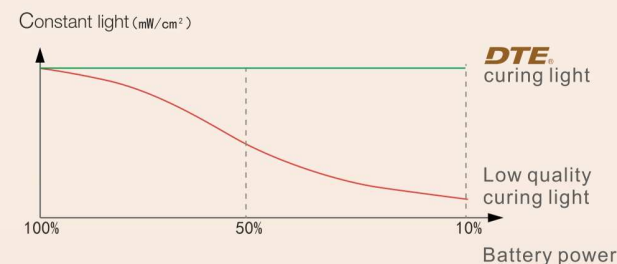
Easy to touch any part of teeth, Can radiate vertically at any angles, especially suitable for posterior teeth

Continuous work time

Full metal body for intelligent cooling system, preventing overheating after long-time work.



CONSTANT LIGHT

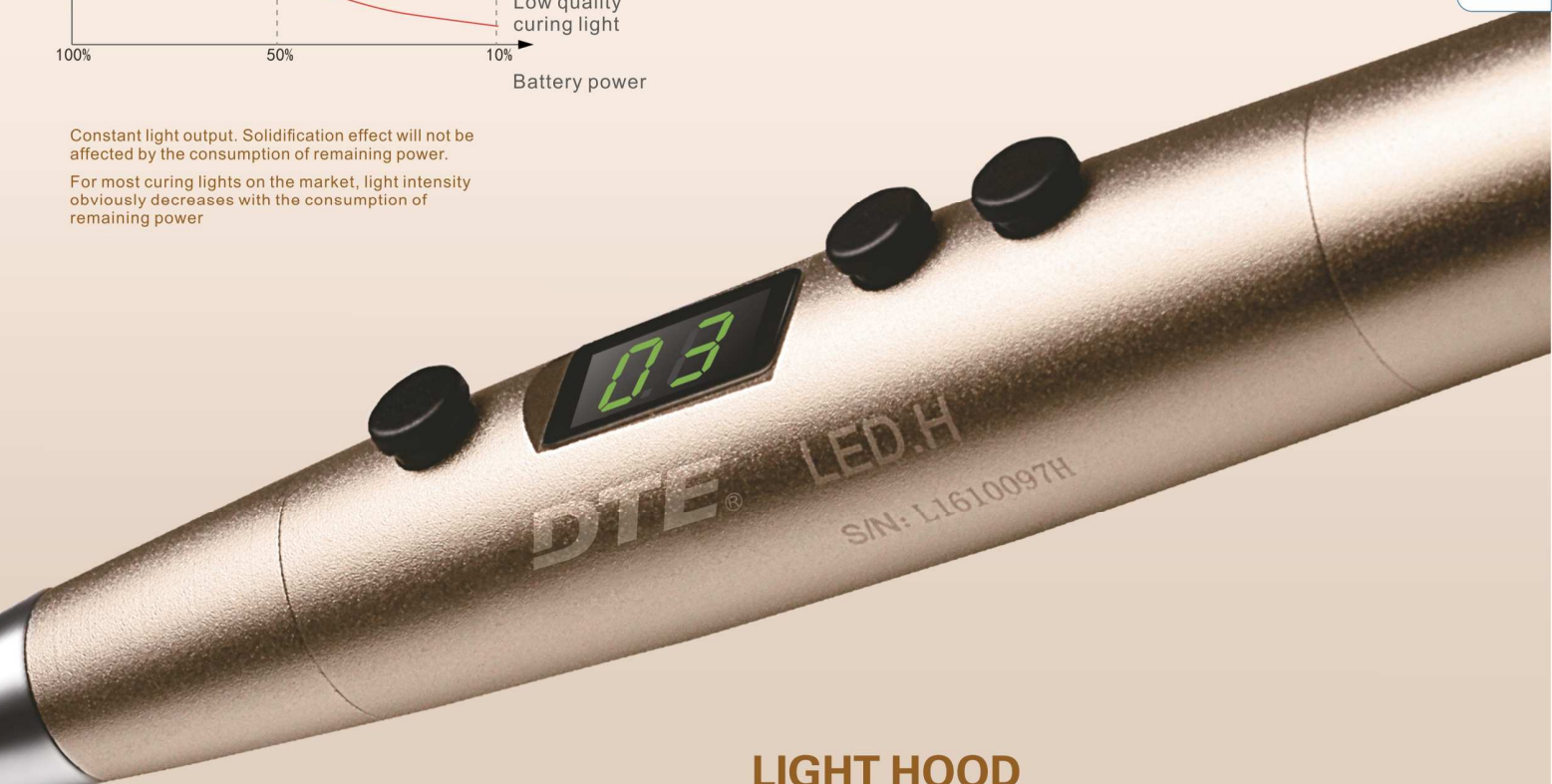


⚠ Tests have shown: curing light without constant light intensity will cause incomplete solidification to the bottom of resin when power drop to about 60%.

Constant light output. Solidification effect will not be affected by the consumption of remaining power.
For most curing lights on the market, light intensity obviously decreases with the consumption of remaining power

Curing light

32



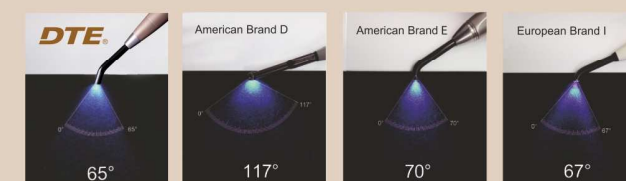
LIGHT HOOD



DTE light hood is made of selected quality materials, rejecting Blue-ray injury.
Studies prove that Blue-ray will cause macular degeneration to retina and eyes.

OPTICAL FIBER

Can be autoclaved under 135°C high temperature and 0.22Mpa high pressure, effectively avoiding cross infection.



BATTERY



DTE lithium battery with CB certification, more reliable, no explosion

Batteries on the market without sound charge management, easily cause explosion under high temperature, unguaranteed quality.

Batteries produced by unknown manufacturer will easily cause safety accidents. Please visit Woodpecker official website (www.giwoodpecker.com), click on video and watch Battery High Temperature Test.



KINGKONG series drop
Resistant dental handpiece

DURABLE AND SOLID LIKE DIAMOND

Even drop and collide, still work excellently

62 National Patents 20 Invention Patents





MORE POWERFUL AND MORE EFFICIENT

Thanks to the new optimized wind wheel and gas path design

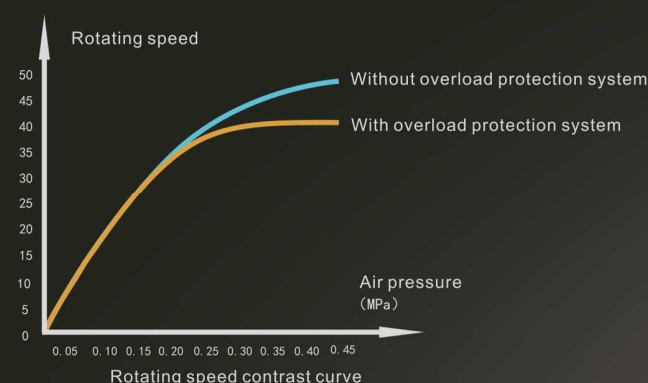
Torque is up to **7.5gf.cm**, which has increased by **62.8%** compared to old type handpiece.

As a result, the cutting efficiency is increased by **94.6%**.

OVERLOAD PROTECTION SYSTEM

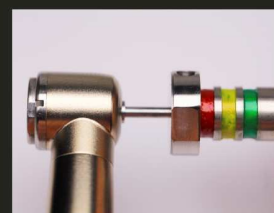


Feature article of overload protection system



The new overload protection system can protect the handpiece from higher pressure, prolonging handpiece's life span.
Dentists do not need to frequently adjust the air pressure, which is more convenient and efficient.

AXIAL CORE WITH BIGGER CLAMPING FORCE



Pull to red graduation :16N
Pull to yellow graduation :20N
Pull to green graduation :24N

Non-spring structure axial core design

It has larger clamping force (which is up to 35N) compared to traditional spring structure axial core.
It can grasp the niddle tighter

It wouldn't be hard to uninstall the burs after intense cutting, making it more convenient to install and uninstall the burs.

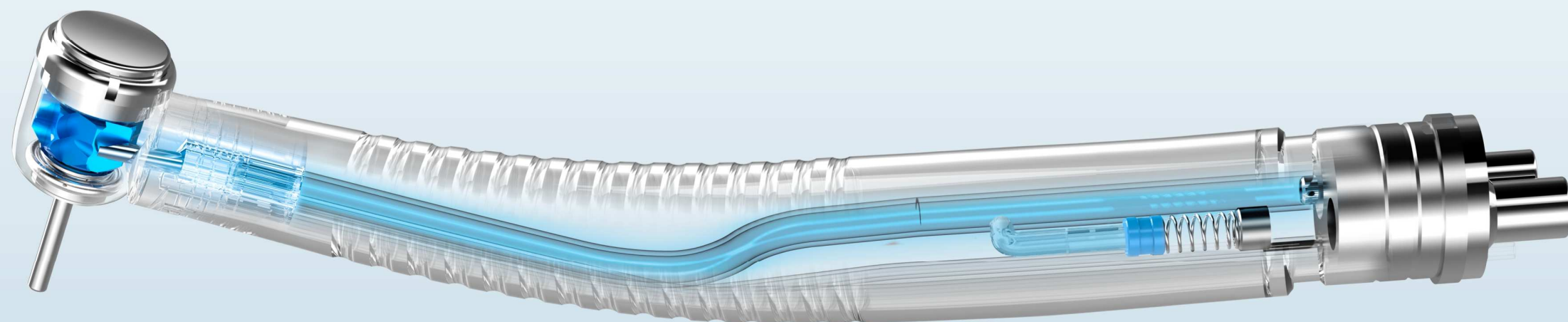
THE CHAMPION AMONG EXCELLENCES

Cutting force raises **94.6%**



Perfect Quality

Dental Turbine Handpiece



Dental Turbine Handpiece

37

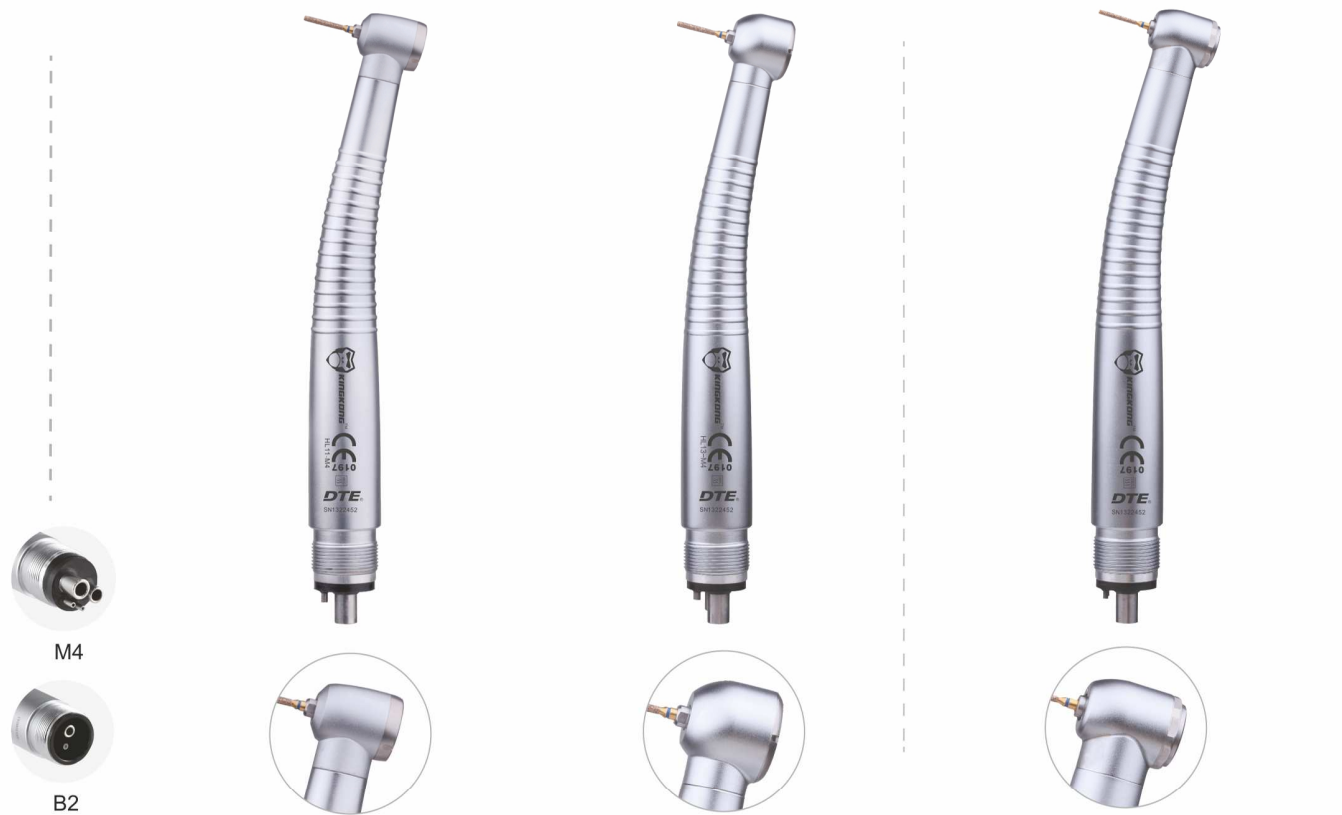
Dental Turbine Handpiece

38

Wrench type

Push button type

Dental Turbine Handpiece
39



Model	HL11-M4/B2	HL13-M4/B2	HP11-M4/B2
Type	Standard Wrench	Super torque	Standard Push button
Characteristics	>Standard head >Easy-replacement cartridge >Compatible with NSK	>Super torque, super power >Easy-replacement cartridge >Compatible with NSK	> High power output with standard head >Bur will never fly out >Anti-Retraction structure
Air pressure	0.18~0.22MPa	0.25~0.27MPa	0.18~0.22MPa
Water pressure	0.2MPa (2.0bar)	0.2MPa (2.0bar)	0.2MPa (2.0bar)
Rotation speed	370,000~430,000rpm	300,000~400,000rpm	350,000~430,000rpm
Head height	12.8mm	13.0mm	13.7mm
Head diameter	Φ 10.2mm	Φ 13.1mm	Φ 10.5mm
Noise	<70dB	<70dB	<70dB



DS-II LED

Woodpecker core technology, reliable cutting efficiency professor
38 patents, 9 invention patents
13 years of R&D, 27 years' Ultrasonic Technology Professor
Exported to 66 countries, including Germany, Switzerland, Italy etc.



Three modes: bone cutting mode, root mode, clean mode.
Application: stomatology, plastic and reconstructive surgery, orthopedic surgery, such as osteotomy, osteoplasty and bone collection.
Handpiece and cable are autoclavable.
Perfect alarm system ensures the safety of operation and machine.

Ultrasonology
40

DS-II, as the product with the core technology of DTE:

owns complete clinical monitoring system, guarantee the safety;

adopts Cascade Fixed Frequency, with more steady and efficient vibration matching;

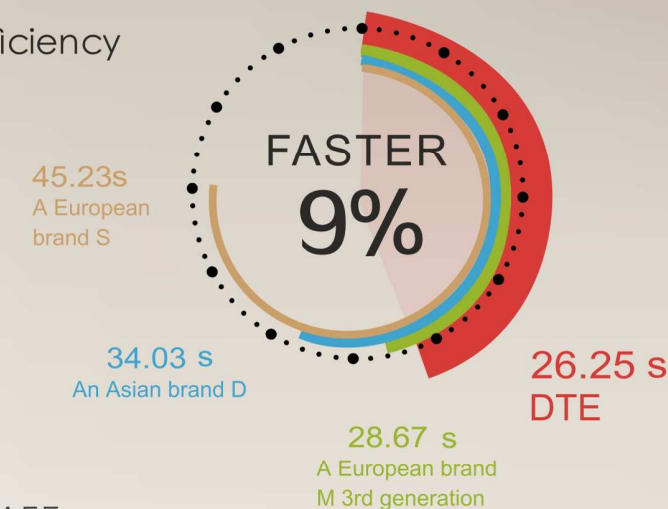
with developed spare parts, more close to and focus on clinical practice.

Industrial design patent No.: CN 200830301694.8



Technical parameters
 Power input 100 - 240V ~ 50Hz/60Hz 600mA (max)
 Frequency 24kHz~36kHz
 Power output 5W~35W
 Main unit weight 3.1kg
 Dimensions 330mm×254mm×167mm

Comparison of cutting efficiency with other famous brands

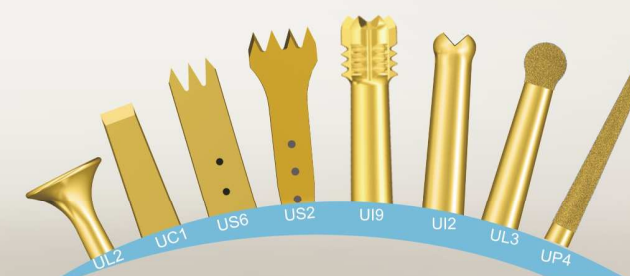


SAFE

Handpiece and pump line can burden UHT sterilization, to make sure the bacteria-free environment

NEWLY DEVELOPED HANDPIECE

Developed internal Structure: handpiece and tip are more compatible, with steady output
 Developed packaging technology: more stable after UHT sterilization, with constant quality



Micrometric cuts, Selective cuts, No harm to soft tissue



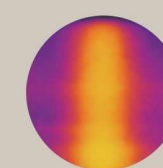
HIGHLIGHT LAMP
CLEAR VISIBILITY



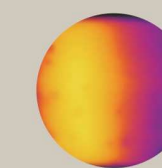
DTE Brand 33°C



Well-known European Brand S 30°C



Well-known European Brand M 33°C



Well-known Asian Brand D 38°C

WORKING 10 MIN UNDER FULL POWER
TEST THE TEMPERATURE OF HANDPIECES

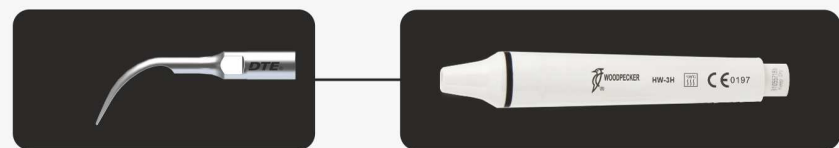


More powerful than you imagine

Please use the correct scaler tip



Tips marked with **DTE** connected to handpiece marked with will lead to serious problem.



Tips marked with connected to handpiece marked with **DTE** will lead to the same problem.

Three kinds of damages are not covered under warranty.



The comparison between DTE tip and disposable tip made in China



DTE tip spray evenly, effective cleaning and cooling



The water spray slanting more than 70% of disposable tip, unable to clean the teeth and cool the tip

The comparison between DTE tip and other tips made in China after sterilization



After 300 cycle sterilized, there isn't any rust on DTE tip, No crack after working 1000 hours



Tips of poor quality start to be cracked after one-hour working, the cracking rate within 10 hours is 35%.



After working 6 minutes, Tips of poor quality started to crack, after 12 hours, all the tips are cracked

If the cracked tip were swallowed by patients, will cause serious medical accidents

To guarantee the safety of you and your patients, please choose original Woodpecker tip

Please choose authentic Woodpecker tips!
Reject to use disposable tips of poor quality!

Scaling

GD1 Supragingival scaling				GD7 Remove dental crown			
GD2 Supragingival scaling				GD8 Remove dental pile, with irrigation			
GD3 Supragingival scaling				GD9 Supragingival scaling			
GD4 Supragingival scaling				GD10 Supragingival scaling			
GD5 Supragingival scaling				GD11 Orthodontic treatment			
GD6 Supragingival scaling							

Periodontics

PD1 Periodontal scaling				PD2L Periodontal scaling			
PD3 Periodontal scaling				PD2R Periodontal scaling			
PD4 Periodontal scaling				PD2LD Remove calculus from narrow inter-root spaces (diamond-coated)			
PD3D Smoothing restoration overhangs and debride in-depth root (diamond-coated)				PD2RD Remove calculus from narrow inter-root spaces (diamond-coated)			

Cavity preparation

SBD1 Removing the caries on occlusal surface of teeth and dental neck				SBDL Half ball diamond tip. Set 45° to the left, to remove the carious teeth without damaging the adjacent teeth.			
SBD2 Removing the caries on Mesial surface of the adjacent teeth				SBDL Half ball diamond tip. Set 45° to the right, to remove the carious teeth without damaging the adjacent teeth.			
SBD3 Removing the caries on Distal surface of the adjacent teeth				GD30 Preparation between pits and fissures			
GD31 Preparation of mesiooclusion cavity				GD32 Preparation of distal and mesial cavity			
GD33 Preparation of teeth veneer							

Shoulder preparation

GD20



Abrade dentin

GD21



Fine repair and polish the prepared shoulder

Endodontics

ED1



120° angle holder, for root canal cleaning

ED10



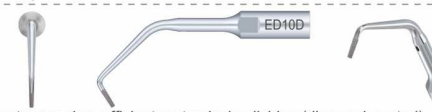
Used for root canal softly treatment

ED2



95° angle holder, for root canal cleaning

ED10D



Used for root canal retrogression, efficient root apical polishing (diamond-coated)

ED3



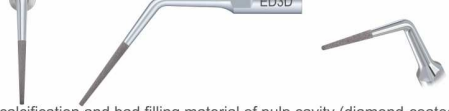
For the lateral thermal condensation of gutta-percha

ED11



Used for root canal softly treatment

ED3D



Used to remove the calcification and bad filling material of pulp cavity (diamond-coated)

ED11D



Used for root canal retrogression, efficient root apical polishing (diamond-coated)

PD4D



Remove calcification in the coronal third of the root canal (diamond-coated)

ED14



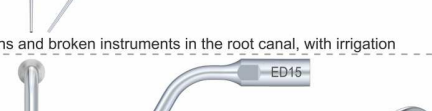
Remove obstructions and broken instruments in the root canal, with irrigation

ED4



Remove obstructions and broken instruments in the root canal

ED15



Remove root canal fillings and broken instruments in the coronal third, with irrigation

ED4D



For retreatments and remove hard materias (diamond-coated)

ED14D



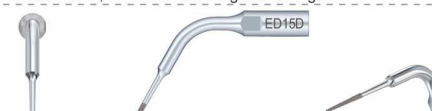
Remove calcification in root canal, root canal cleaning and enlargement

ED5



Remove root canal fillings and broken instruments in the coronal third

ED15D



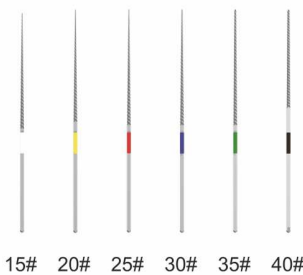
Remove calcification in root canal, root canal cleaning and enlargement

ED5D



Remove dental overhangs in the pulp chamber (diamond-coated)

NITI K-File



Tip with excellent tenacity is used for root canal cleaning
 File size: 32.5mm±0.5mm
 Handpiece size: Φ0.68mm~0.71mm
 K-file taper: 2%
 Each kit with six pieces, one kit for one model

ED8



Burs holder, used to expand root canal and grind teeth

ED9



Burs holder, used to expand root canal and grind teeth

Scaling

GD1T



Supragingival scaling

GD6T



Supragingival scaling

GD2T



Supragingival scaling

GD7T



Remove dental crown

GD3T



Supragingival scaling

GD8T



Remove dental pile, with irrigation

GD4T



Supragingival scaling

GD9T



Supragingival scaling

GD5T



Supragingival scaling

GD10T



Supragingival scaling

Endodontics

ED1T



120° angle holder, for root canal cleaning

ED9T



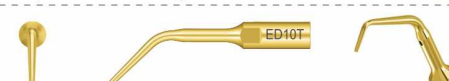
Burs holder, used to expand root canal and grind teeth

ED2T



95° angle holder, for root canal cleaning

ED10T



Used for root canal softly treatment

ED3T



For the lateral thermal condensation of gutta-percha

ED11T



Used for root canal softly treatment

ED4T



Remove obstructions and broken instruments in the root canal

ED14T



Remove obstructions and broken instruments in the root canal, with irrigation

ED5T



Remove root canal fillings and broken instruments in the coronal third

ED15T



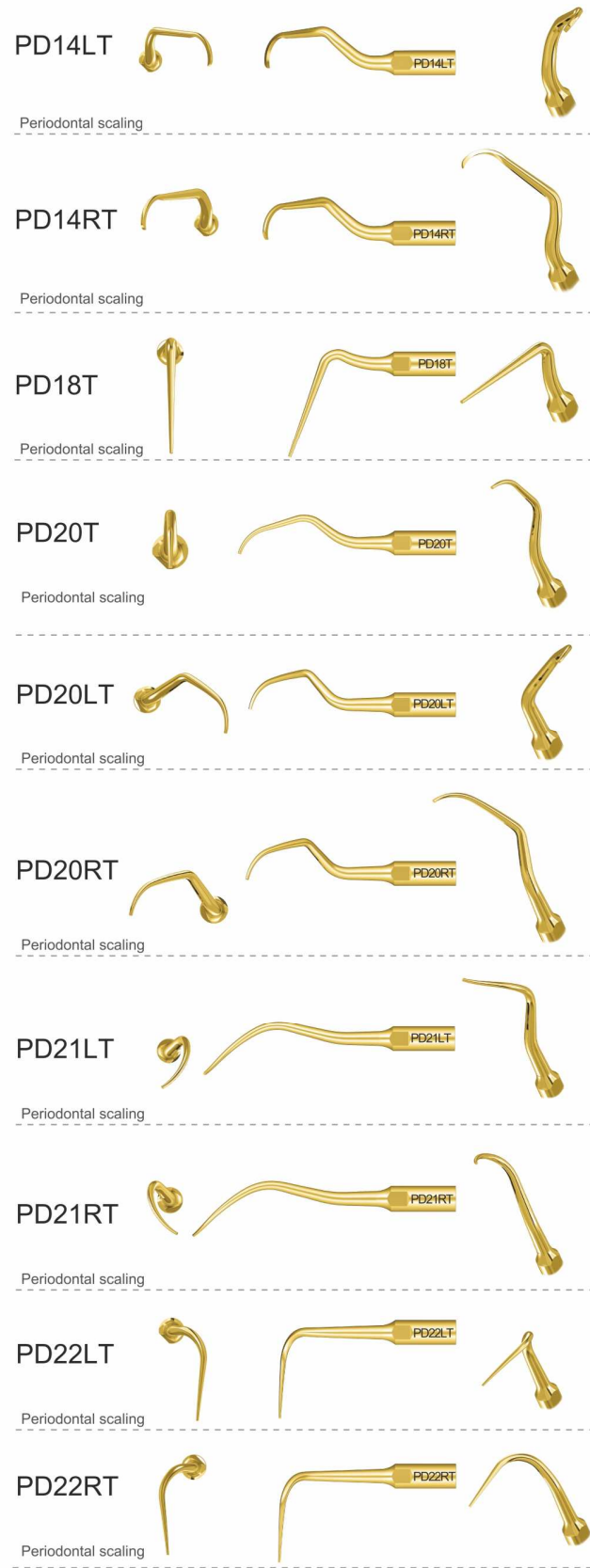
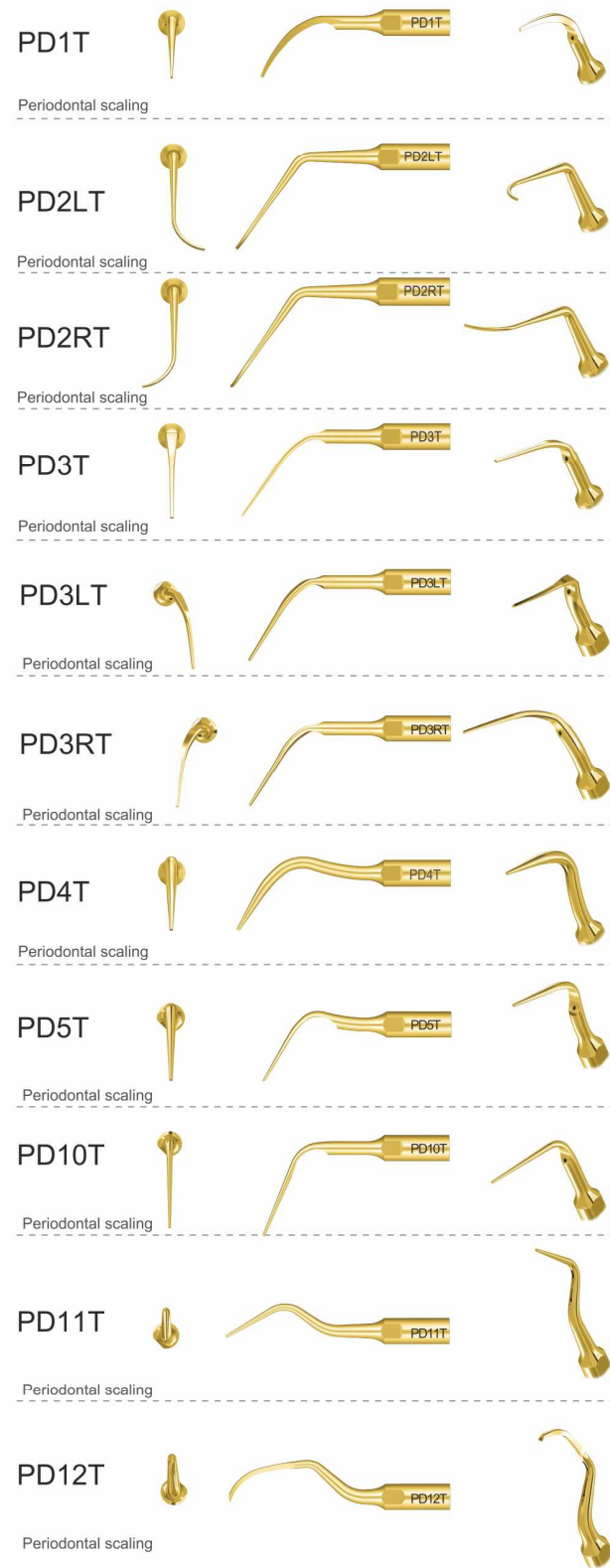
Remove root canal fillings and broken instruments in the coronal third, with irrigation

ED8T

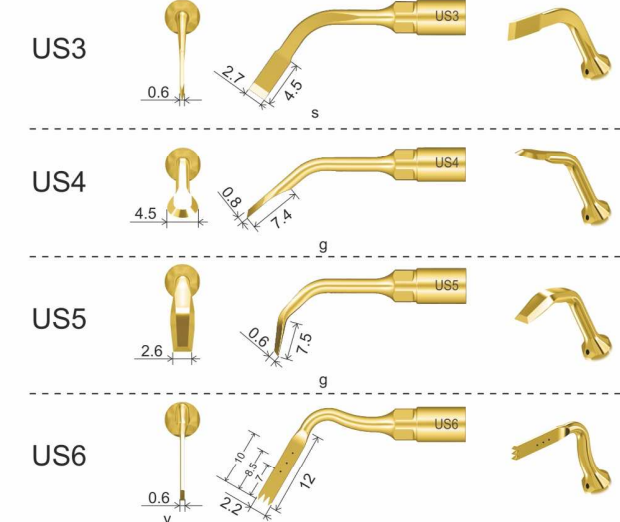
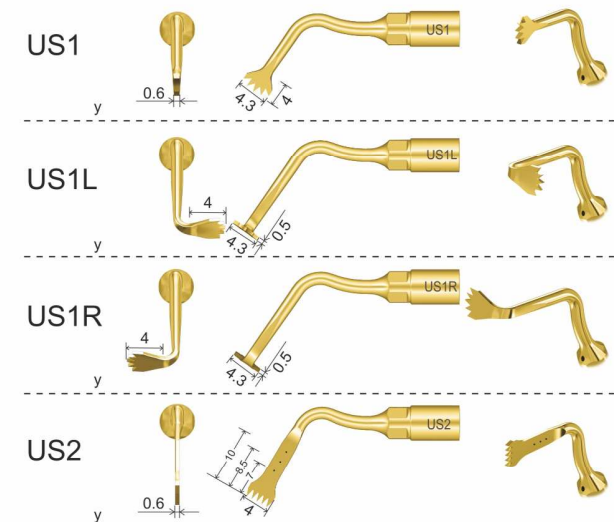


Burs holder, used to expand root canal and grind teeth

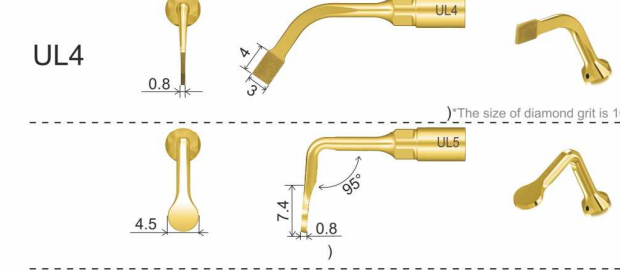
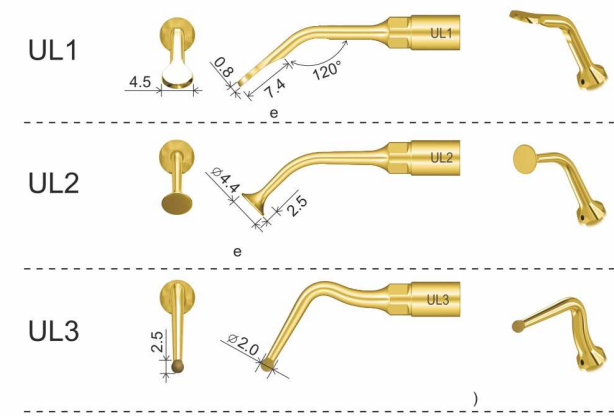
Periodontics **new!**



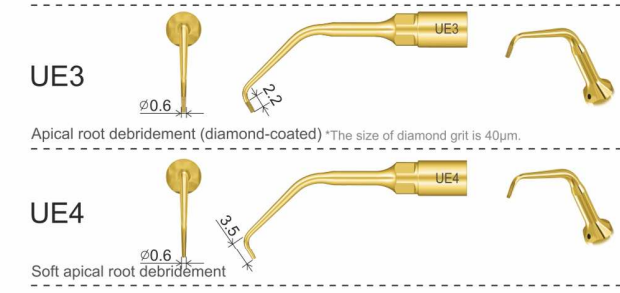
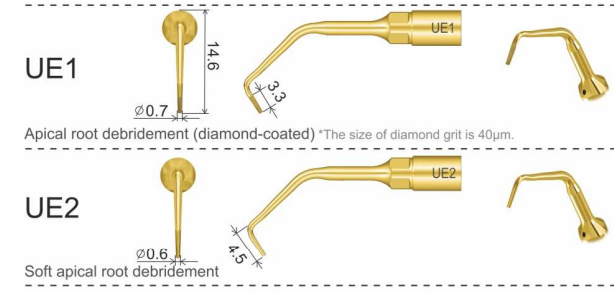
Bone surgery



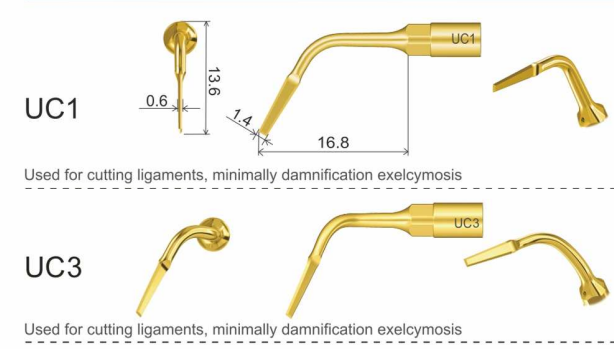
Sinus lifting



Endodontic



Exelcymosis



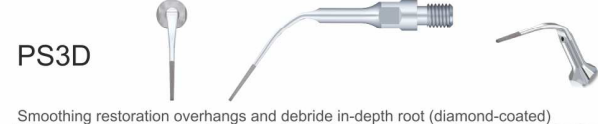
Tips

49

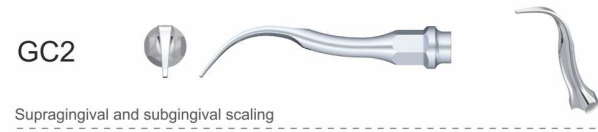
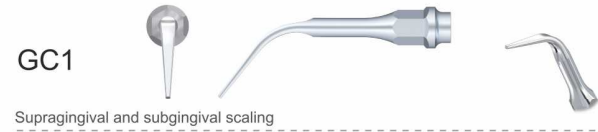
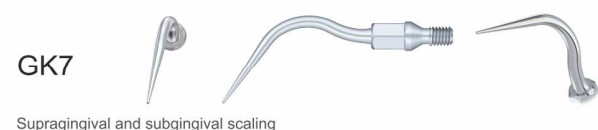
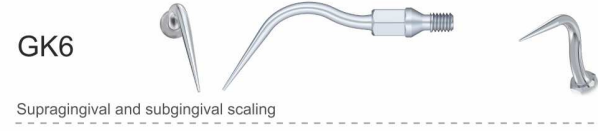
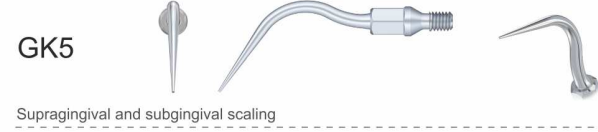
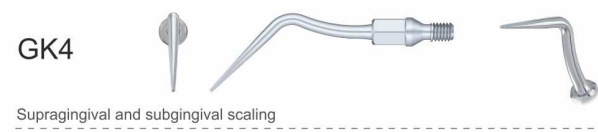
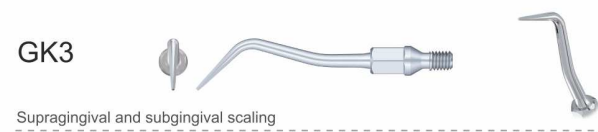
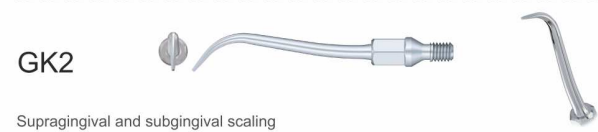
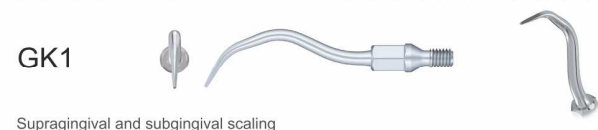
Tips

50

Periodontics (Used for SIRONA)



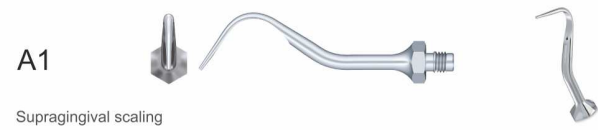
Scaling (Used for KAVO)



Periodontics (Used for KAVO)



Used for AMDENT



HD-8L

Used for :DTE scaler with detachable handpiece. With light, better view, autoclavable. Complete metal-made body



Weight	62.33g
Dimensions	114.36mm x Φ19.1mm

HD-8H

· USED FOR: DTE scalars with detachable handpiece. without light



Weight	56g
Dimensions	123mm×Φ20.5mm

HD-7L

· USED FOR: DTE scalars with detachable handpiece, with light, better view, autoclavable. Plastic head and metal head are optional.



Weight	63g
Dimensions	111mm×Φ20.5mm



Weight	57g
Dimensions	111mm×Φ20.5mm

HD-7H

· USED FOR: DTE scalars with detachable handpiece, without light , autoclavable.
· Two colours optional (white/ blue)



Weight	57g
Dimensions	117mm×Φ21mm



Weight	57g
Dimensions	117mm×Φ21mm

HD-2L New!

· USED FOR: D2 LED, with light, better view, handpiece sleeve is autoclavable
· Three colours optional to the handpiece sleeve (green/ blue/ amethyst).



Weight	156g (+cable)
Dimensions	140mm×Φ20mm

HD-1

· USED FOR: D1/V1.



Weight	124g (+cable)
Dimensions	125.7mm×Φ18mm

Tips

53

Spare Parts

54

Spare parts for ultrasonic scaler

AT-1 Auto water supply system

- Instead of infusion bottle, it can be placed at any flat surfaces to fit the working environment.
- Made of high-qualified material, it is safe and durable.
- Pneumatic water control ensures consistency in water pressure.
- Compatible with scalers of any brands.
- Delicate in design, small in space occupation.



Autoclavable set
Handpiece×1
Torque wrench×1
Endo wrench×1
(6 tips optional)



Detachable cable
With different connectors,
available for handpiece
HD-7H, HD-7L respectively



TD-1L Torque wrench
← Hold the tips.
TD-1 Torque wrench
← Can not hold the tips.



TD-2L Torque wrench
Hold the tips.



TD-E1 Endo wrench
Used for changing the
ultrasonic U-file and
screwing / unscrewing
the endo chuck
TD-A wrench
For replacement of dental
burs and burs holder



TD-5L Torque wrench
For DTE and SATELEC
scaler tips
TS-5L Torque wrench
For Sirona scaler tips
TK-5L Torque wrench
For Kavo scaler tips



TW-3 Wrench



Peristaltic pump



1# Tip holder



2# Tip holder



Foot switch(round)



LED lamp



File stand



Foot switch(square)



Quick connector



Diaphragm pump

Spare parts for dental turbine handpiece



HL11-M4/B2
Cartridge



HP13-M4/B2
Cartridge



HP11-M4/B2
Cartridge



HL13-M4/B2
Cartridge



Bur key



Bearing A
(steel ball)



Cap spanner applicable
for HP13-M4/B2
HL11-M4/B2



Cap spanner applicable
for HL11-M4/B2



Cap spanner applicable
for HL13-M4/B2



Cap spanner applicable
for HP11-M4/B2

Spare parts for apex locator



Lip hook



Measuring wire



File clip



Measuring file



Tester



Endo ruler

Spare parts for curing light



Optical fiber
Black and white optional
Can be autoclaved under high
temperature and high pressure
1# Dimensions: Φ8mm
2# Dimensions: Φ8mm
1# Applicable for: LUX E
2# Applicable for: LUX V- LUX VI

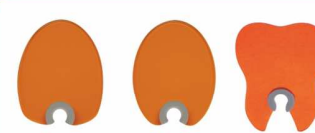


For LUX I, LUX E

For LUX V, LUX VI

Adapter

Power input:
AC100V-240V 50Hz/60Hz
Output voltage/current:
DC 5.0V/1.0A



Light hood



Battery

①: ICR14500
Battery Voltage: 3.7V
Applicable for: LUX V, LUX VI
③: ICR18490B
Battery Voltage: 3.7V
Applicable for: LUX I

②: ICR18490A

Battery Voltage: 3.7V
Applicable to LUX E



Lightmeter



Bathymeter



Disposable sleeve
for LUX I



LED lamp
3W, 5W



Glasses